

**5 Point Fabrication, LLC
d/b/a GENMAC**

1680 Cornell Road
Green Bay, WI 54313

LIMITED WARRANTY

5 Point Fabrication, LLC d/b/a GENMAC (“GENMAC”) warrants that the ordered machine will be constructed in accordance with normal GENMAC methods of manufacture and to the specifications set forth in the purchase order. GENMAC’s machine is warranted to be free of defects in material and workmanship for a period of twelve (12) months from the date of invoice (the “Warranty Period”), provided that GENMAC’s machine has been properly mounted and wired, properly lubricated and the machine has been properly maintained in accordance with the GENMAC maintenance manual, and further, provided, the machine has not been abused, misused, neglected, damaged accidentally or improperly operated, including the amount of pressure used. Wear due to highly abrasive or corrosive atmosphere shall not be considered a defect. Subject to the terms and conditions set forth herein, GENMAC agrees to replace, free of charge, any part or parts of the machine which fail through defect in material or workmanship within the Warranty Period. To invoke the warranty, customer shall, within the Warranty Period, provide GENMAC written notice of any alleged defect. Upon receipt of written notice of defect, GENMAC will, at its option, repair or replace the defective equipment or component. If GENMAC determines that the alleged defective equipment or component requires replacement, GENMAC will ship an identical or similar equipment or component to the customer and invoice customer for the same. After replacement equipment or components are installed on the machine, customer must return the alleged defective equipment or components to GENMAC for evaluation. Upon verification of defect, GENMAC will issue a full credit to customer covering the cost of the replacement equipment or components, but excluding labor, handling and shipping costs, which shall be the customer’s responsibility. Any equipment or components of GENMAC’s machine replaced under warranty shall have the same warranty as new equipment or components of GENMAC’s machine, but any such replacement does not extend the warranty of the original machine. No warranty is made with respect to: (1) consumable items within GENMAC’s machine, such as silicone grease, Teflon or other coatings, Teflon belts, sealing ribbons, cutting knives, etc.; (2) failures not reported to GENMAC within the Warranty Period; (3) failures or damage due to misapplication, lack of proper maintenance, abuse, improper installation, mounting, lubrication, wiring or abnormal conditions of temperature, moisture, dirt, or corrosive matter, etc.; (4) failures due to operation, either intentional or otherwise, above the rated capacities, or in an otherwise improper manner; (5) any component of the machine which has been altered by anyone other than an authorized representative of GENMAC; and (6) any component of the machine damaged without fault of GENMAC. GENMAC shall not be liable for any expenses incurred by the customer in an attempt to correct any allegedly defective machine or part thereof. Failure to make any payment of the sale price as it becomes due shall cancel this warranty and a re-commencement of payments shall not operate to reinstate the Warranty Period or expand the terms of this limited warranty or any other warranty imposed by operation of law. GENMAC assumes no responsibility for unauthorized repairs of its machine even though defective, or for the failure of the machine due to jamming or overload, improper refuse removal or improper tooling, even though unintentional. GENMAC is not liable for losses, damages or delays due to any defect, and customer’s rights under this Warranty shall be the customer’s only remedy.



SAFE T DECALS give instant warning that sharp blades are in operation alerting the operator as well as employees working near your slicer that a hazard exists. The SAFE T DECALS are made of a tough durable plastic designed to take the rigorous environment of food processing facilities. Adhesive mounted, SAFE T DECALS can be placed on any slicing machine in your processing line. Order SAFE T DECALS now to alert your employees of slicing machine hazards.

IMPORTANT SAFETY FIRST
READ THESE INSTRUCTIONS BEFORE INSTALLING,
OPERATING, MAINTAINING OR CLEANING
EQUIPMENT

1. MARK A MINIMUM "SAFE AREA" AROUND THE MACHINE.
2. TEST SAFETY GUARDS BEFORE OPERATING MACHINE
3. ONLY AUTHORIZED TRAINED PERSONNEL SHOULD WORK WITH OR NEAR MACHINE.
4. MACHINE SHOULD BE UNDER POWER ONLY WHEN THE PRODUCT IS BEING PROCESSED.
5. IMPORTANT!! IF FOR ANY REASON, INCLUDING, BUT NOT LIMITED TO, IMPROPER PRODUCT FEED, BLOCKAGE, UNFORESEEN MALFUNCTION, ETC., OCCUR, FIRST PRIORITIES ARE TO:
 - A. TURN AIR OFF!
 - B. SEEK SUPERVISOR'S ASSISTANCE, AND
 - C. ASSURE SAFETY BEFORE RESTARTING.
7. WARNING DECALS ARE PLACED ON ALL GUARDS, REPLACE THEM WHEN WORN. DO NOT OPERATE THE MACHINE WITHOUT SAFETY DECALS IN PLACE.

**** CLEAN UP AND MAINTENANCE CREWS ****

1. DISCONNECT ALL TO MACHINE BEFORE MAINTENANCE OR CLEANING.
2. WEAR PROTECTIVE GLOVES. USE LONG HANDLED BRUSHES FOR CLEANING ANY HAZARDOUS AREAS.

IF ASSISTANCE IS REQUIRED CONTACT
MANUFACTURER BEFORE OPERATING THE EQUIPMENT
REMEMBER THE SAFEST MACHINE IS ONLY AS SAFE AS YOU WANT
IT TO BE !!

PHONE: 920-458-2189 FAX: 920-458-8316

E-MAIL: sales@genmac.com

IMPORTANT NOTICE

Employ machine only for the purpose advertised by manufacturer.

Due to federal laws dealing with safety, GENMAC requires that operating and safety instructions related to this machine, be brought to the attention of any and all personnel who operates, maintains, cleans or supervises or manages its use.

If this machine is disposed of or used by any other concern, these instructions must accompany the machine and be brought to the attention of such concern.

GENMAC is to be promptly notified if the machine is sold or disposed of in any manner:

Phone: 920-458-2189

Fax: 920-458-8316

E-mail: sales@genmac.com

Only parts or equipment manufactured by GENMAC, or authorized by GENMAC in writing, are to be employed on or with this machine.

READ THIS IMPORTANT NOTICE WITH REGARD TO SAFETY

Our engineering department is continually evaluating both new safety equipment and that employed in the field. Consequently, we require immediate notification in regard to any perceived hazards, and prior to any modifications, or if the machine is sold, loaned, transferred, or otherwise disposed of. That information will allow us to maintain accurate files and assure continued safe operation.

GENMAC
A Division of 5 Point Fabrication LLC.
1680 Cornell Road
Green Bay, WI 54313 USA
www.genmac.com
Phone: 920-458-2189
Fax: 920-458-8316
E-mail: sales@genmac.com

YOUR ATTENTION PLEASE:

This notice or copy thereof must be brought to the attention of all personnel connected with the operation, maintenance, sales, and/or disposition of GENMAC Equipment. Attach to your permanent records for regular reference.

WARNING

DO NOT CONNECT AIR OR OPERATE MACHINE WITHOUT VISUALLY CHECKING TO SEE THAT ALL MOVING PARTS ARE SECURED, AND ANY OBSTACLES ARE REMOVED FROM THE CUTTING AREAS.

DO NOT REMOVE AND/OR MODIFY ANY MACHINE COMPONENTS. ALL COMPONENTS SUCH AS GUARDS, PANELS, GAUGES, ETC. MUST BE IN PLACE AND FUNCTION PROPERLY BEFORE MACHINE IS PUT INTO OPERATION. ANY MALFUNCTION, OR MISSING COMPONENTS MUST BE BROUGHT TO THE ATTENTION OF THE MANUFACTURER IMMEDIATELY.

This safety notice should be prominently displayed in the work area, given to the supervisor and operation personnel in an effort for all employees to be concerned about safety precautions.

GENMAC

A Division of 5 Point Fabrication LLC.

1680 Cornell Road

Green Bay, WI 54313 USA

www.genmac.com

Phone: 920-458-2189

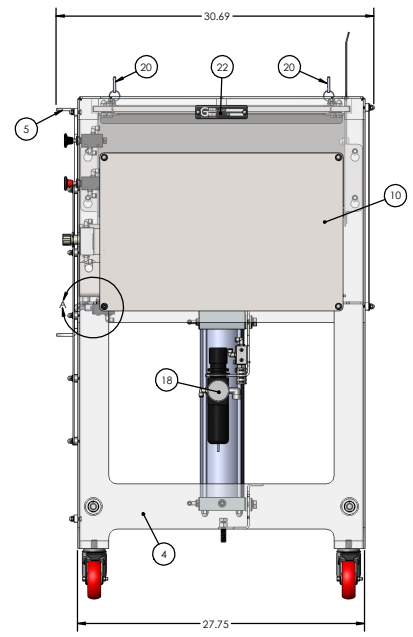
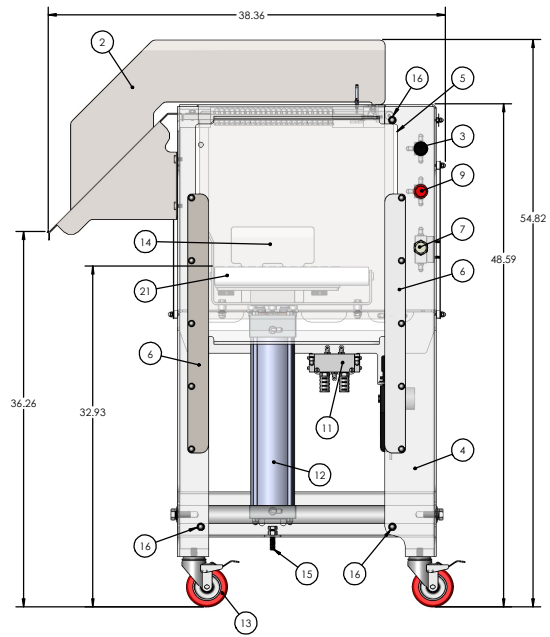
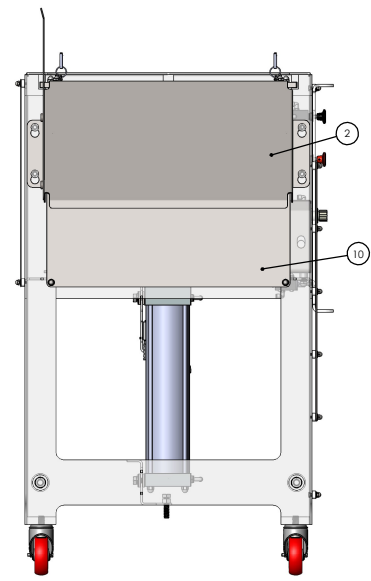
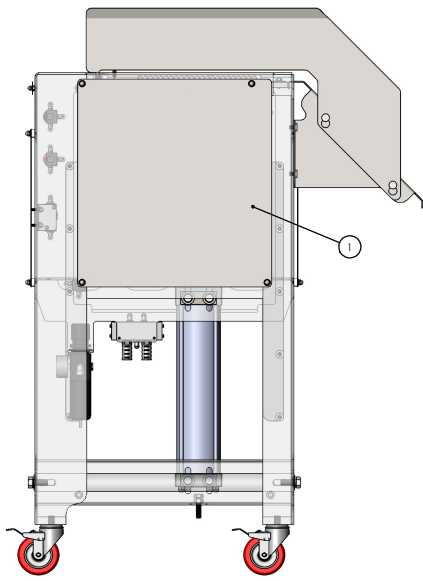
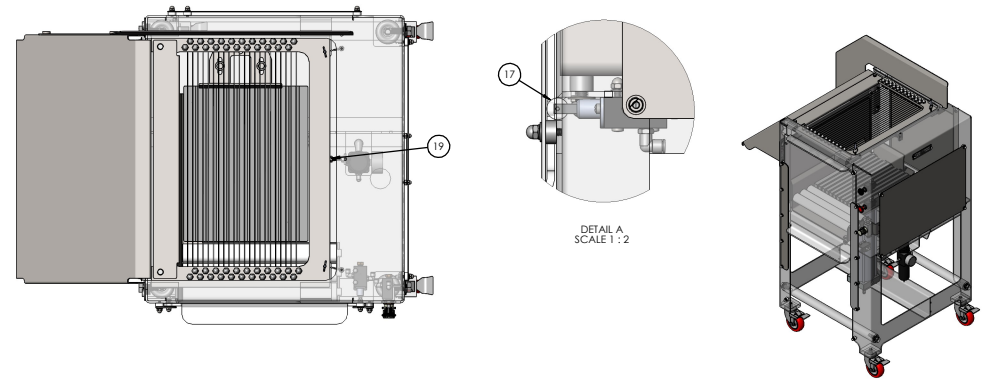
Fax: 920-458-8316

E-mail: sales@genmac.com

ITEM NO.	QTY.	PART NUMBER
1	1	1805-BACK-PANEL
2	1	1805-BACK-STOP
3	1	1805-BB
4	1	1805-CHAMP-WELDMENT
5	1	1805-DOOR
6	2	1805-DOOR-GUIDE
7	1	1805-FCB
8	1	1805-GENERIC-VHA
9	1	1805-RB
10	2	1805-SIDE-PANEL
11	1	1805-VALVE-ASSY
12	1	1805-VERTICAL-CYLINDER
13	4	1820-CASTER-ASSY
14	1	3005-LD-CHEESE-STOP
15	1	3005-LD-CYLINDER-JACK
16	3	3005-LD-DOOR-STOP
17	1	3005-LD-DOOR-SWITCH
18	1	3005-LD-FILTER-GUAGE
19	1	3005-LD-HARP-JACK
20	2	3005-LD-LANYARD
21	1	3005-LD-MINI-RB
22	1	NAME-PLATE-ASSY

ITEM 8 IS A GENERIC HARP ASSEMBLY THAT ASSEMBLY IS CUSTOM MADE FOR EACH OF THE CUSTOMR'S SPECIFIC NEEDS. CALL GENMAC (920) 458-2189 FOR MORE DETAILS

REVISIONS				
ZONE	REV.	DESCRIPTION	DATE	APPROVED
	0	INITIAL RELEASE	3/5/2022	B.VAN



UNLESS OTHERWISE SPECIFIED: DIMENSIONS ARE IN INCHES TOLERANCES: FRACTIONS: \pm 1/16 DECIMALS: \pm 0.005 THREE PLACE DECIMAL: \pm 0.001	REFERENCE PART	1680 Cornell Road, Green Bay, WI 54313 (920) 458-2189 www.genmac.com
PROPERTY AND CONFIDENTIALITY: THE INFORMATION CONTAINED HEREIN IS THE PROPERTY OF GENMAC AND IS TO BE KEPT CONFIDENTIAL. NO PART OF THIS DOCUMENT IS TO BE REPRODUCED OR TRANSMITTED IN ANY FORM OR BY ANY MEANS, ELECTRONIC OR MECHANICAL, INCLUDING PHOTOCOPYING, RECORDING, OR BY ANY INFORMATION STORAGE AND RETRIEVAL SYSTEM, WITHOUT THE WRITTEN PERMISSION OF GENMAC & COMPANY, INC.	GENMAC	TITLE: 1805 ASSEMBLY
DATE: 03/05/22	SIZE: D	DWG. NO.: 1805-PURCHASED-PARTS
SCALE: 1/8	MATERIAL: SEE DETAILS	WEIGHT: SHEET 1 OF 22

4

3

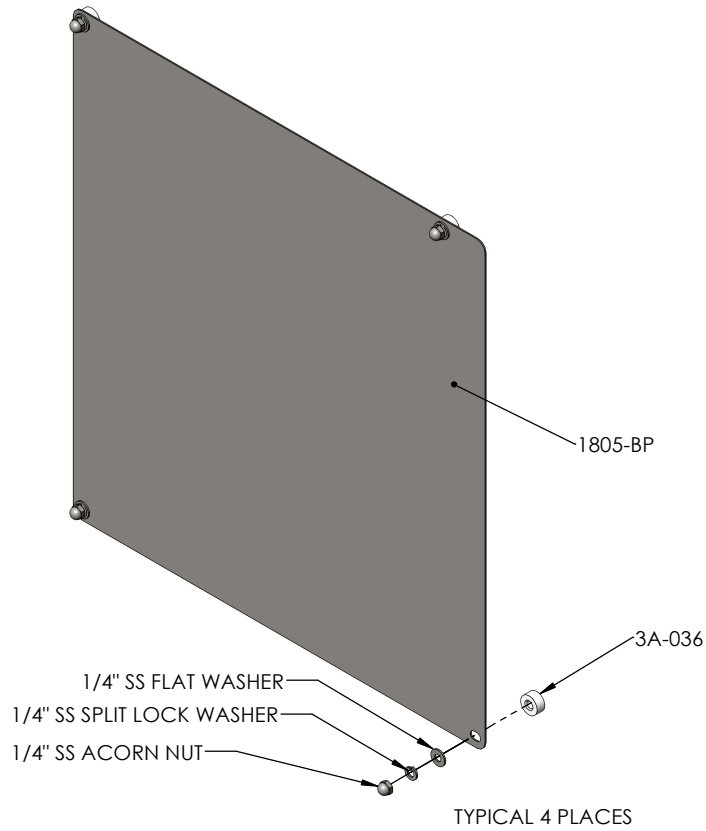
2

1

REVISIONS				
ZONE	REV.	DESCRIPTION	DATE	APPROVED
	0	INITIAL RELEASE	3/5/2022	B.VAN


B

A



B

A

UNLESS OTHERWISE SPECIFIED:		REFERENCE PART		 1680 Cornell Road, Green Bay, WI 54313 (920) 458-2189 www.genmac.com					
DIMENSIONS ARE IN INCHES TOLERANCES: FRACTIONAL $\pm 1/16"$ ANGULAR: MACH $\pm .5$ BEND ± 1 TWO PLACE DECIMAL $\pm .030"$ THREE PLACE DECIMAL $\pm .015"$		INTERPRET GEOMETRIC TOLERANCING PER:		TITLE: 1805 BACK PANEL					
PROPRIETARY AND CONFIDENTIAL THE INFORMATION CONTAINED IN THIS DRAWING IS THE SOLE PROPERTY OF GENMAC ANY REPRODUCTION IN PART OR AS A WHOLE WITHOUT THE WRITTEN PERMISSION OF GENMAC IS PROHIBITED.		<table border="1"> <tr><th>NAME</th><th>DATE</th></tr> <tr><td>B.VAN</td><td>3-5-22</td></tr> </table>	NAME	DATE	B.VAN	3-5-22	SIZE: B DWG. NO.: 1805-PURCHASED-PARTS	REV: 0	SCALE: 1:4 MATERIAL: SEE DETAILS WEIGHT:
NAME	DATE								
B.VAN	3-5-22								
				SHEET 2 OF 22					

4

3

2

1

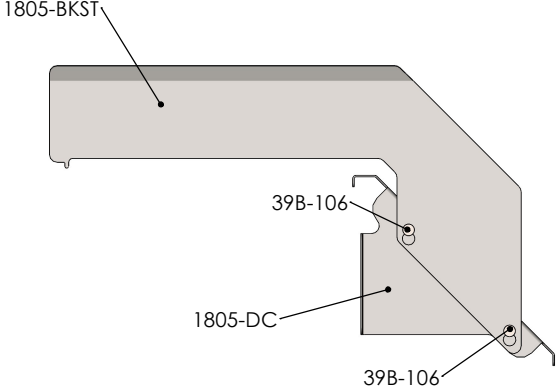
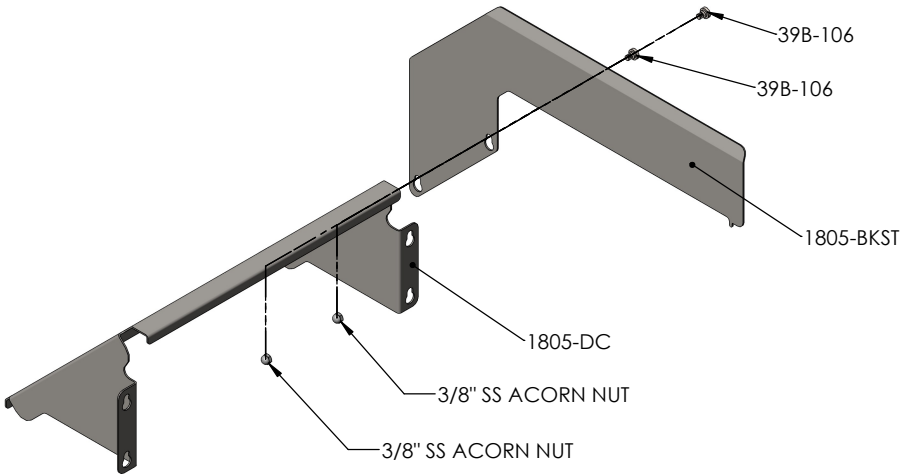
4


3

2

1

REVISIONS				
ZONE	REV.	DESCRIPTION	DATE	APPROVED
	0	INITIAL RELEASE	3/5/2022	B.VAN



UNLESS OTHERWISE SPECIFIED: DIMENSIONS ARE IN INCHES TOLERANCES: FRACTIONAL $\pm 1/16"$ ANGULAR: MACH $\pm .5$ BEND ± 1 TWO PLACE DECIMAL $\pm .030"$ THREE PLACE DECIMAL $\pm .015"$	REFERENCE PART		 1680 Cornell Road, Green Bay, WI 54313 (920) 458-2189 www.genmac.com			
	INTERPRET GEOMETRIC TOLERANCING PER:			TITLE: 1805-BACK-STOP		
PROPRIETARY AND CONFIDENTIAL THE INFORMATION CONTAINED IN THIS DRAWING IS THE SOLE PROPERTY OF GENMAC ANY REPRODUCTION IN PART OR AS A WHOLE WITHOUT THE WRITTEN PERMISSION OF GENMAC IS PROHIBITED.	DRAWN	NAME B.VAN	DATE 3-5-22	SIZE B	DWG. NO. 1805-PURCHASED-PARTS	REV 0
	CHECKED			SCALE: 1:8	MATERIAL SEE DETAILS	WEIGHT:
	ENG APPR.					
	MFG APPR.					
Q.A.						SHEET 3 OF 22

4

3

2

1

B

B

A

A

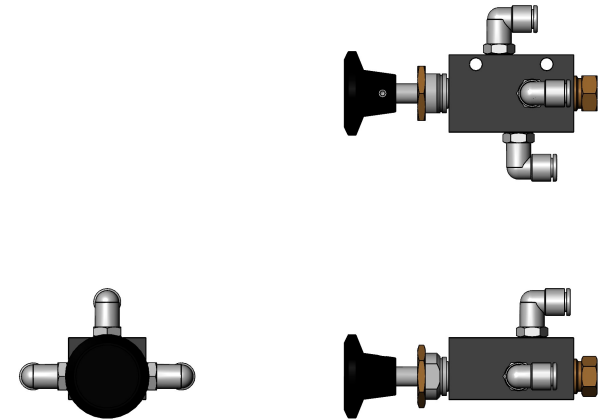
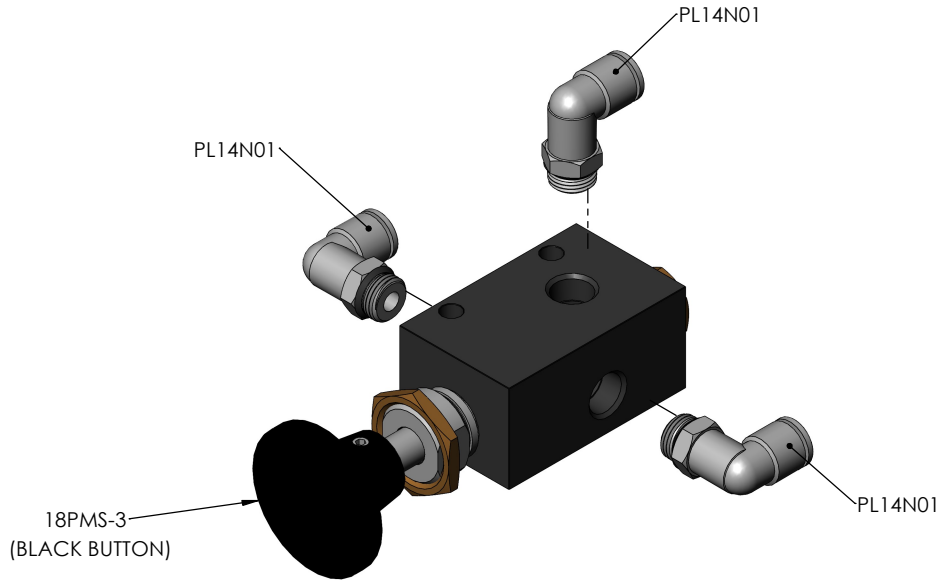
4


3

2

1

REVISIONS				
ZONE	REV.	DESCRIPTION	DATE	APPROVED
	0	INITIAL RELEASE	3/5/2022	B.VAN



UNLESS OTHERWISE SPECIFIED: DIMENSIONS ARE IN INCHES TOLERANCES: FRACTIONAL $\pm 1/16"$ ANGULAR: MACH $\pm .5$ BEND ± 1 TWO PLACE DECIMAL $\pm .030"$ THREE PLACE DECIMAL $\pm .015"$	REFERENCE PART		 1680 Cornell Road, Green Bay, WI 54313 (920) 458-2189 www.genmac.com	TITLE: 1805-BB			
	INTERPRET GEOMETRIC TOLERANCING PER:			SIZE B	DWG. NO. 1805-PURCHASED-PARTS	REV 0	
PROPRIETARY AND CONFIDENTIAL THE INFORMATION CONTAINED IN THIS DRAWING IS THE SOLE PROPERTY OF GENMAC ANY REPRODUCTION IN PART OR AS A WHOLE WITHOUT THE WRITTEN PERMISSION OF GENMAC IS PROHIBITED.	DRAWN	NAME B.VAN	DATE 3-5-22	SCALE: 1:2	MATERIAL SEE DETAILS	WEIGHT:	SHEET 4 OF 22
	CHECKED						
	ENG APPR.						
	MFG APPR.						
Q.A.							

4

3

2

1

4

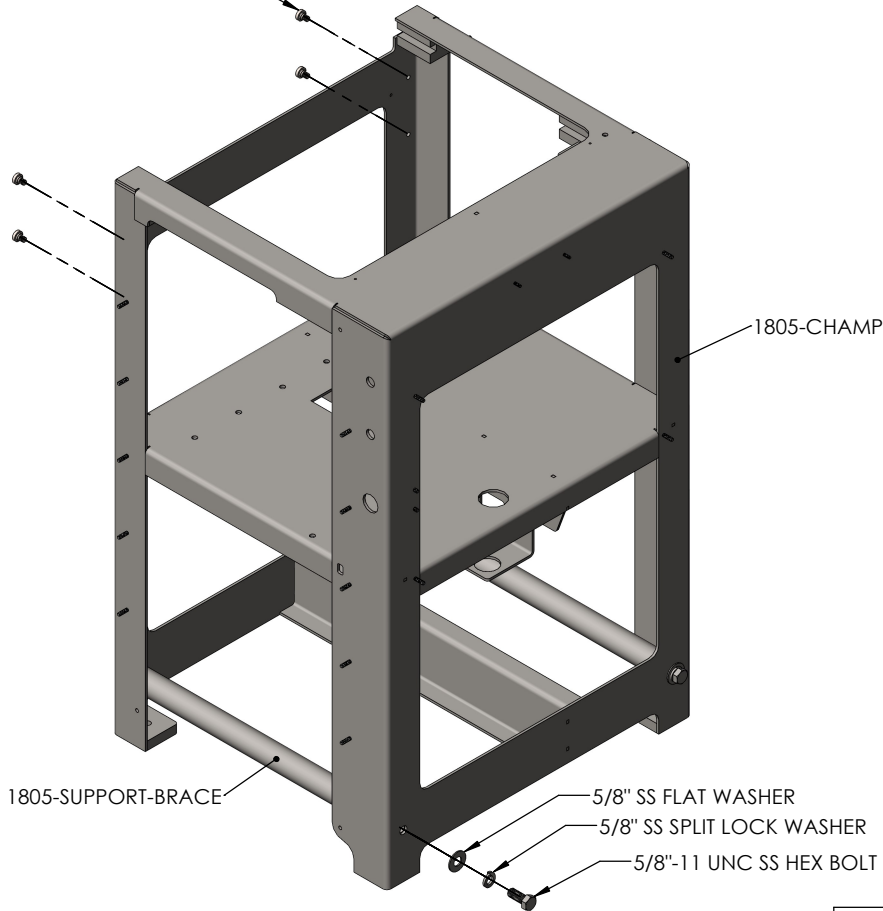
3

2

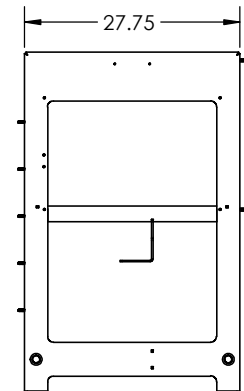
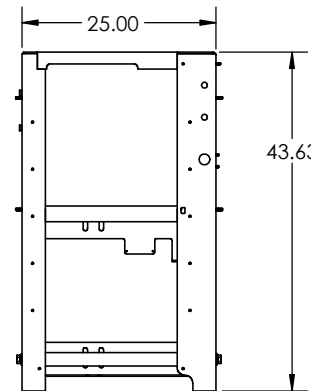
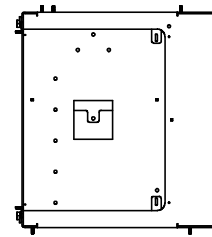
1

TYPICAL 4 PLACES

39B-106



REVISIONS				
ZONE	REV.	DESCRIPTION	DATE	APPROVED
	0	INITIAL RELEASE	3/5/2022	B.VAN




1805-SUPPORT-BRACE

5/8" SS FLAT WASHER

5/8" SS SPLIT LOCK WASHER

5/8"-11 UNC SS HEX BOLT 1 1/2" LONG

UNLESS OTHERWISE SPECIFIED:		REFERENCE PART		 1680 Cornell Road, Green Bay, WI 54313 (920) 458-2189 www.genmac.com			
DIMENSIONS ARE IN INCHES TOLERANCES: FRACTIONAL: ±1/16" ANGULAR: MACH ±.5 BEND ±1 TWO PLACE DECIMAL ±.030" THREE PLACE DECIMAL ±.015"		INTERPRET GEOMETRIC TOLERANCING PER:				TITLE: 1805-CHAMP-WELDMENT	
PROPRIETARY AND CONFIDENTIAL THE INFORMATION CONTAINED IN THIS DRAWING IS THE SOLE PROPERTY OF GENMAC ANY REPRODUCTION IN PART OR AS A WHOLE WITHOUT THE WRITTEN PERMISSION OF GENMAC IS PROHIBITED.		NAME	DATE	SIZE	DWG. NO.	REV	
		DRAWN	B.VAN	3-5-22	B	1805-PURCHASED-PARTS	0
		CHECKED					
		ENG APPR.					
		MFG APPR.		SCALE:	MATERIAL	WEIGHT:	
		Q.A.		1:16	SEE DETAILS	SHEET 5 OF 22	

4

3

2

1

B

B

A

A

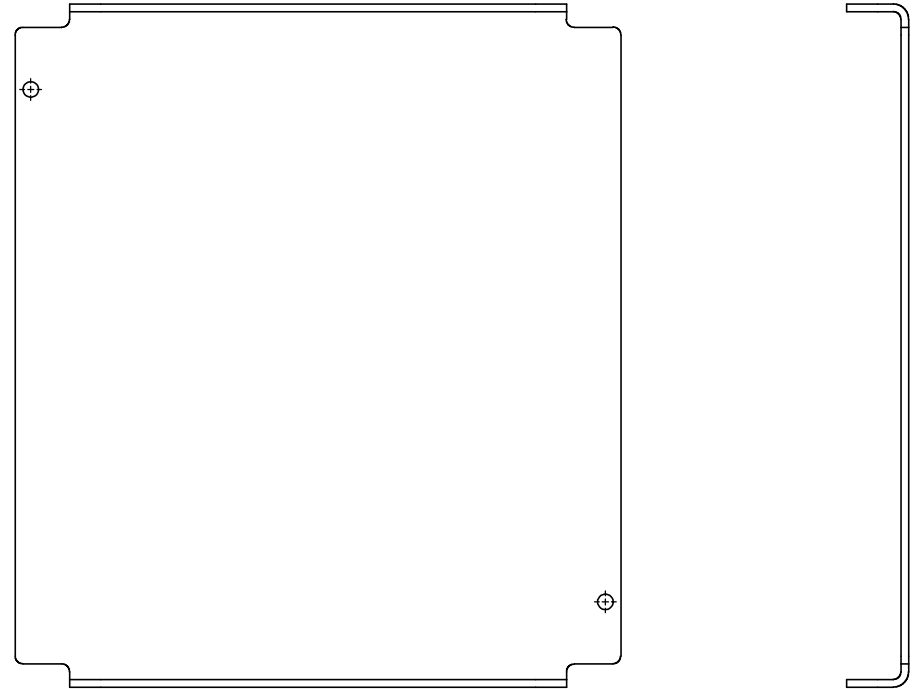
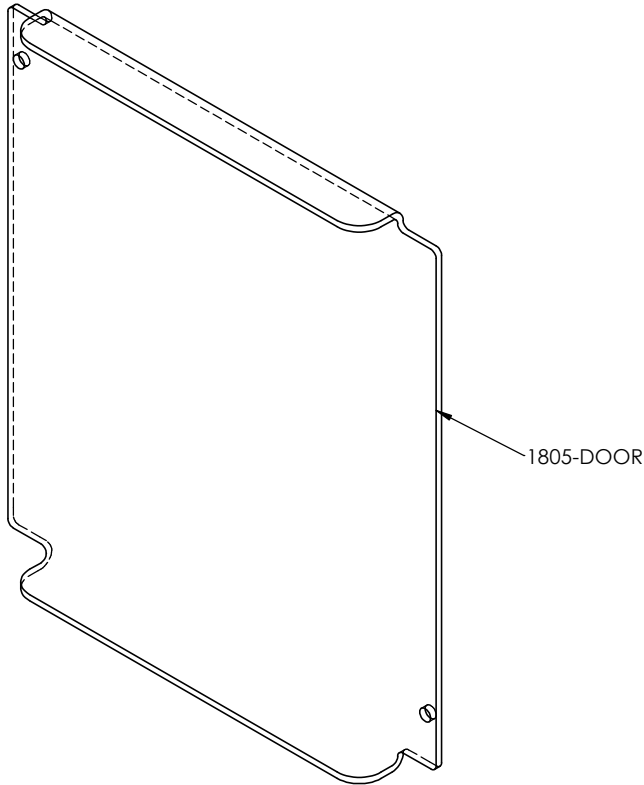
4


3

2

1

REVISIONS				
ZONE	REV.	DESCRIPTION	DATE	APPROVED
	0	INITIAL RELEASE	3/5/2022	B.VAN



UNLESS OTHERWISE SPECIFIED: DIMENSIONS ARE IN INCHES TOLERANCES: FRACTIONAL $\pm 1/16"$ ANGULAR: MACH $\pm .5$ BEND ± 1 TWO PLACE DECIMAL $\pm .030"$ THREE PLACE DECIMAL $\pm .015"$	REFERENCE PART		 1680 Cornell Road, Green Bay, WI 54313 (920) 458-2189 www.genmac.com			
	INTERPRET GEOMETRIC TOLERANCING PER:				TITLE: 1805-DOOR	
PROPRIETARY AND CONFIDENTIAL THE INFORMATION CONTAINED IN THIS DRAWING IS THE SOLE PROPERTY OF GENMAC ANY REPRODUCTION IN PART OR AS A WHOLE WITHOUT THE WRITTEN PERMISSION OF GENMAC IS PROHIBITED.	DRAWN	NAME	DATE	SIZE	DWG. NO.	REV
	CHECKED	B.VAN	3-22-21	B	1805-PURCHASED-PARTS	0
	ENG APPR.			SCALE:	MATERIAL	WEIGHT:
	MFG APPR.			1:4	.250" CLEAR POLYCARBONATE	3.925 LBM
	Q.A.					SHEET 6 OF 22

4

3

2

1

B

B

A

A

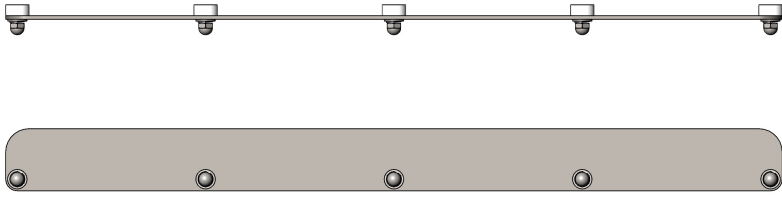
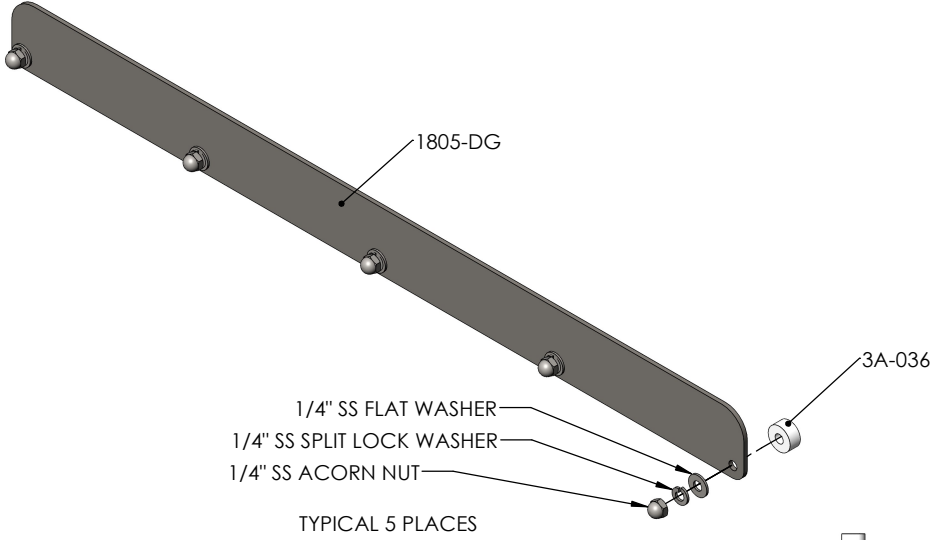
4


3

2

1

REVISIONS				
ZONE	REV.	DESCRIPTION	DATE	APPROVED
	0	INITIAL RELEASE	3/5/2022	B.VAN



UNLESS OTHERWISE SPECIFIED: DIMENSIONS ARE IN INCHES TOLERANCES: FRACTIONAL $\pm 1/16"$ ANGULAR: MACH $\pm .5$ BEND ± 1 TWO PLACE DECIMAL $\pm .030"$ THREE PLACE DECIMAL $\pm .015"$	REFERENCE PART	 1680 Cornell Road, Green Bay, WI 54313 (920) 458-2189 www.genmac.com	TITLE: 1805-DOOR-GUIDE	
	PROPRIETARY AND CONFIDENTIAL THE INFORMATION CONTAINED IN THIS DRAWING IS THE SOLE PROPERTY OF GENMAC ANY REPRODUCTION IN PART OR AS A WHOLE WITHOUT THE WRITTEN PERMISSION OF GENMAC IS PROHIBITED.		INTERPRET GEOMETRIC TOLERANCING PER:	SIZE: B DWG. NO.: 1805-PURCHASED-PARTS SCALE: 1:4

4

3

2

1

4

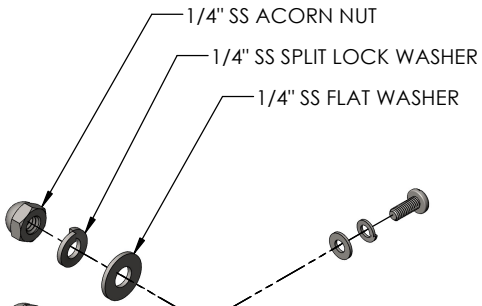
3

2

1

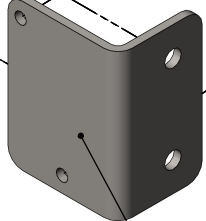
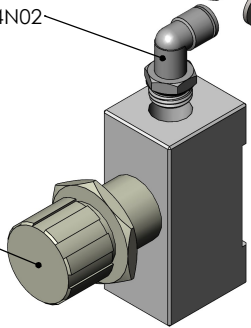
REVISIONS				
ZONE	REV.	DESCRIPTION	DATE	APPROVED
	0	INITIAL RELEASE	3/5/2022	B.VAN

TYPICAL 2 PLACES



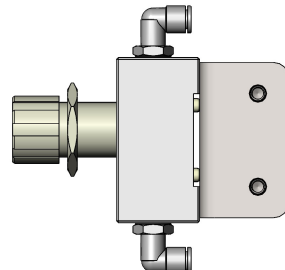
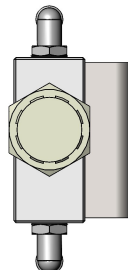
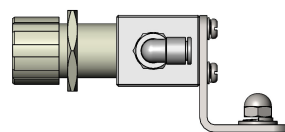
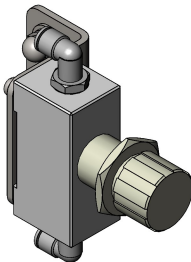
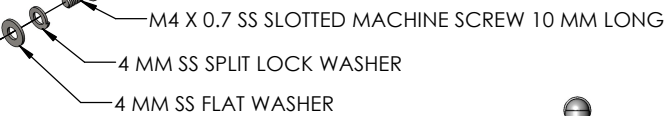
PL14N02

AS4000-N02




1805-SCB

TYPICAL 2 PLACES



PL14N02

UNLESS OTHERWISE SPECIFIED: DIMENSIONS ARE IN INCHES TOLERANCES: FRACTIONAL: ±1/16" ANGULAR: MACH ±.5 BEND ±1 TWO PLACE DECIMAL ±.030" THREE PLACE DECIMAL ±.015"	REFERENCE PART		 1680 Cornell Road, Green Bay, WI 54313 (920) 458-2189 www.genmac.com		
	INTERPRET GEOMETRIC TOLERANCING PER:				TITLE: 1805-FCB
PROPRIETARY AND CONFIDENTIAL THE INFORMATION CONTAINED IN THIS DRAWING IS THE SOLE PROPERTY OF GENMAC ANY REPRODUCTION IN PART OR AS A WHOLE WITHOUT THE WRITTEN PERMISSION OF GENMAC IS PROHIBITED.	NAME	DATE	SIZE	DWG. NO.	REV
	DRAWN	B.VAN	3-5-22	B 1805-PURCHASED-PARTS	0
	CHECKED				
	ENG APPR.				
MFG APPR.					
Q.A.			SCALE: 1:2	MATERIAL: SEE DETAILS	WEIGHT:
			SHEET 8 OF 22		

4

3

2

1

B

B

A

A

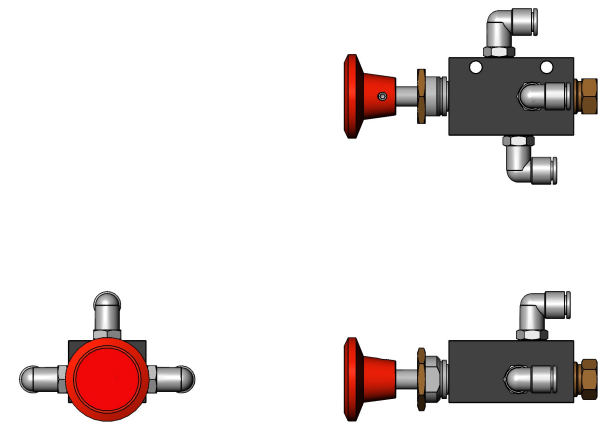
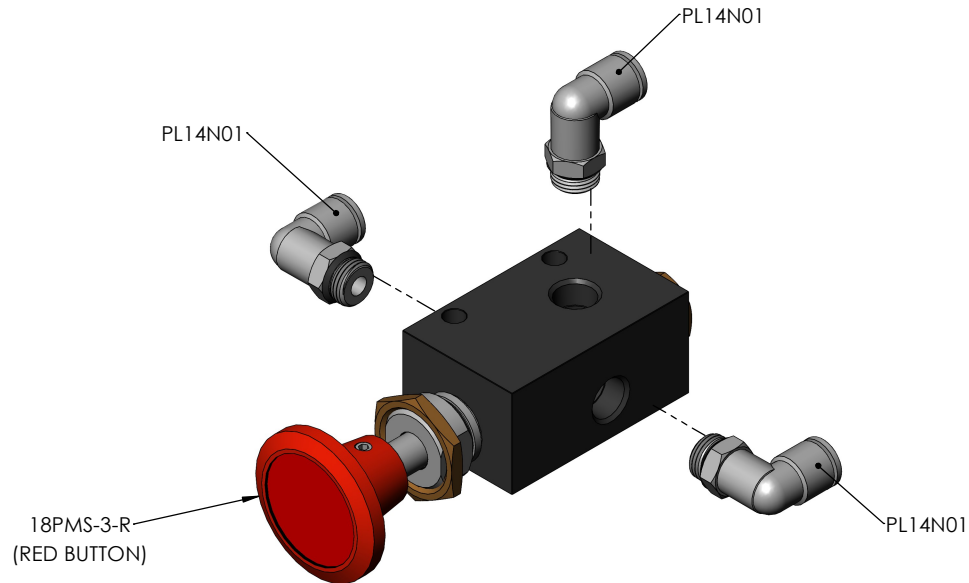
4


3

2

1

REVISIONS				
ZONE	REV.	DESCRIPTION	DATE	APPROVED
	0	INITIAL RELEASE	3/5/2022	B.VAN



UNLESS OTHERWISE SPECIFIED: DIMENSIONS ARE IN INCHES TOLERANCES: FRACTIONAL $\pm 1/16"$ ANGULAR: MACH $\pm .5$ BEND ± 1 TWO PLACE DECIMAL $\pm .030"$ THREE PLACE DECIMAL $\pm .015"$	REFERENCE PART	 1680 Cornell Road, Green Bay, WI 54313 (920) 458-2189 www.genmac.com	TITLE:			
	INTERPRET GEOMETRIC TOLERANCING PER:		1805-RB			
PROPRIETARY AND CONFIDENTIAL THE INFORMATION CONTAINED IN THIS DRAWING IS THE SOLE PROPERTY OF GENMAC ANY REPRODUCTION IN PART OR AS A WHOLE WITHOUT THE WRITTEN PERMISSION OF GENMAC IS PROHIBITED.	NAME	DATE	SIZE	DWG. NO.	REV	
	DRAWN	B.VAN	3-5-22	B	1805-PURCHASED-PARTS	0
	CHECKED					
	ENG APPR.					
MFG APPR.			SCALE:	MATERIAL	WEIGHT:	
Q.A.			1:2	SEE DETAILS		
					SHEET 9 OF 22	

4

3

2

1

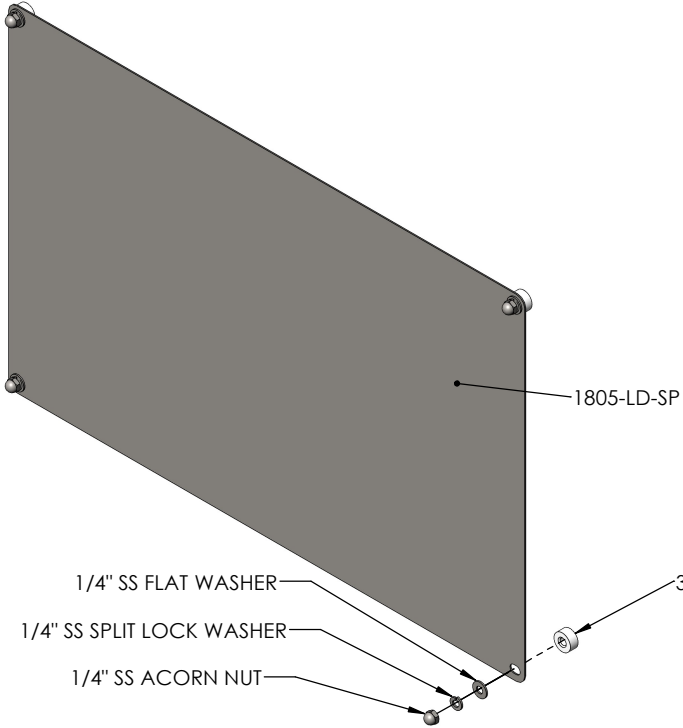
4

3

2

1

REVISIONS				
ZONE	REV.	DESCRIPTION	DATE	APPROVED
	0	INITIAL RELEASE	3/5/2022	B.VAN




- 1/4" SS FLAT WASHER
- 1/4" SS SPLIT LOCK WASHER
- 1/4" SS ACORN NUT

TYPICAL 4 PLACES

3A-036



UNLESS OTHERWISE SPECIFIED: DIMENSIONS ARE IN INCHES TOLERANCES: FRACTIONAL $\pm 1/16"$ ANGULAR: MACH ± 5 BEND ± 1 TWO PLACE DECIMAL $\pm 0.030"$ THREE PLACE DECIMAL $\pm 0.015"$	REFERENCE PART		 1680 Cornell Road, Green Bay, WI 54313 (920) 458-2189 www.genmac.com			
	INTERPRET GEOMETRIC TOLERANCING PER:			TITLE: 1805-SIDE-PANEL		
PROPRIETARY AND CONFIDENTIAL THE INFORMATION CONTAINED IN THIS DRAWING IS THE SOLE PROPERTY OF GENMAC ANY REPRODUCTION IN PART OR AS A WHOLE WITHOUT THE WRITTEN PERMISSION OF GENMAC IS PROHIBITED.	DRAWN	NAME B.VAN	DATE 3-5-22	SIZE B	DWG. NO. 1805-PURCHASED-PARTS	REV 0
	CHECKED			SCALE: 1:4	MATERIAL SEE DETAILS	WEIGHT:
	ENG APPR.					
	MFG APPR.					
	Q.A.					SHEET 10 OF 22

4

3

2

1

B

B

A

A

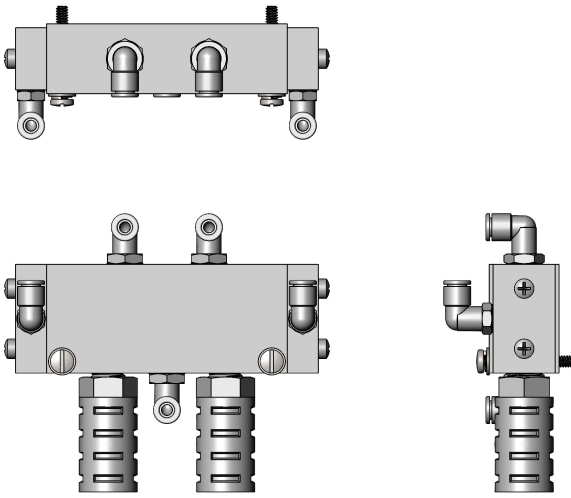
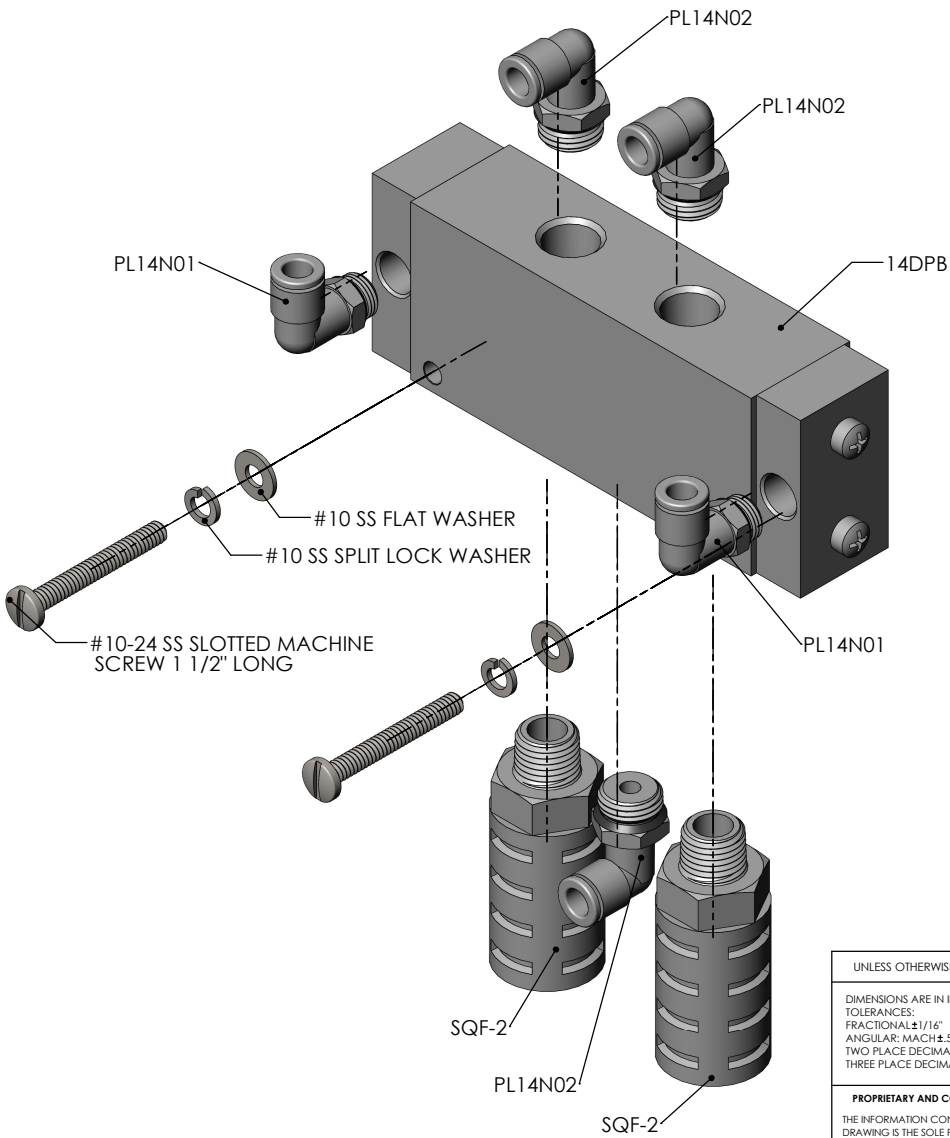
4


3

2

1

REVISIONS				
ZONE	REV.	DESCRIPTION	DATE	APPROVED
	0	INITIAL RELEASE	3/5/2022	B.VAN



UNLESS OTHERWISE SPECIFIED:		REFERENCE PART		 1680 Cornell Road, Green Bay, WI 54313 (920) 458-2189 www.genmac.com											
DIMENSIONS ARE IN INCHES TOLERANCES: FRACTIONAL: ±1/16" ANGULAR: MACH ±.5 BEND ±1 TWO PLACE DECIMAL ±.030" THREE PLACE DECIMAL ±.015"		INTERPRET GEOMETRIC TOLERANCING PER:		TITLE: 1805-VALVE-ASSEMBLY											
PROPRIETARY AND CONFIDENTIAL THE INFORMATION CONTAINED IN THIS DRAWING IS THE SOLE PROPERTY OF GENMAC ANY REPRODUCTION IN PART OR AS A WHOLE WITHOUT THE WRITTEN PERMISSION OF GENMAC IS PROHIBITED.		<table border="1"> <tr> <th>NAME</th> <th>DATE</th> </tr> <tr> <td>B.VAN</td> <td>3-5-22</td> </tr> </table>	NAME	DATE	B.VAN	3-5-22	<table border="1"> <tr> <th>SIZE</th> <th>DWG. NO.</th> </tr> <tr> <td>B</td> <td>1805-PURCHASED-PARTS</td> </tr> </table>	SIZE	DWG. NO.	B	1805-PURCHASED-PARTS	<table border="1"> <tr> <th>REV</th> </tr> <tr> <td>0</td> </tr> </table>	REV	0	
NAME	DATE														
B.VAN	3-5-22														
SIZE	DWG. NO.														
B	1805-PURCHASED-PARTS														
REV															
0															
		SCALE: 1:2	MATERIAL: SEE DETAILS	WEIGHT:	SHEET 11 OF 22										

4

3

2

1

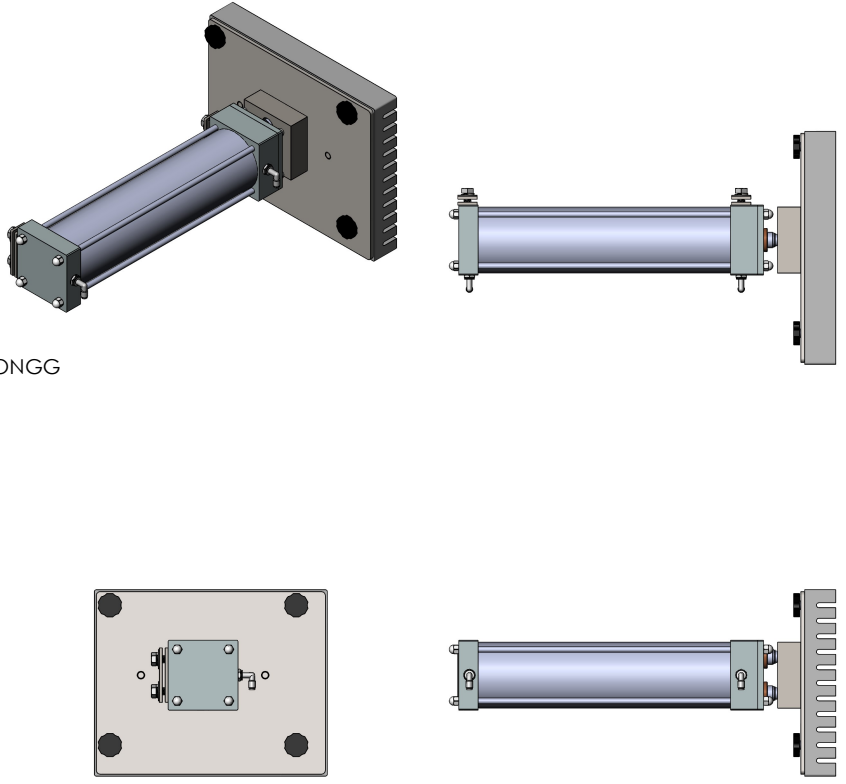
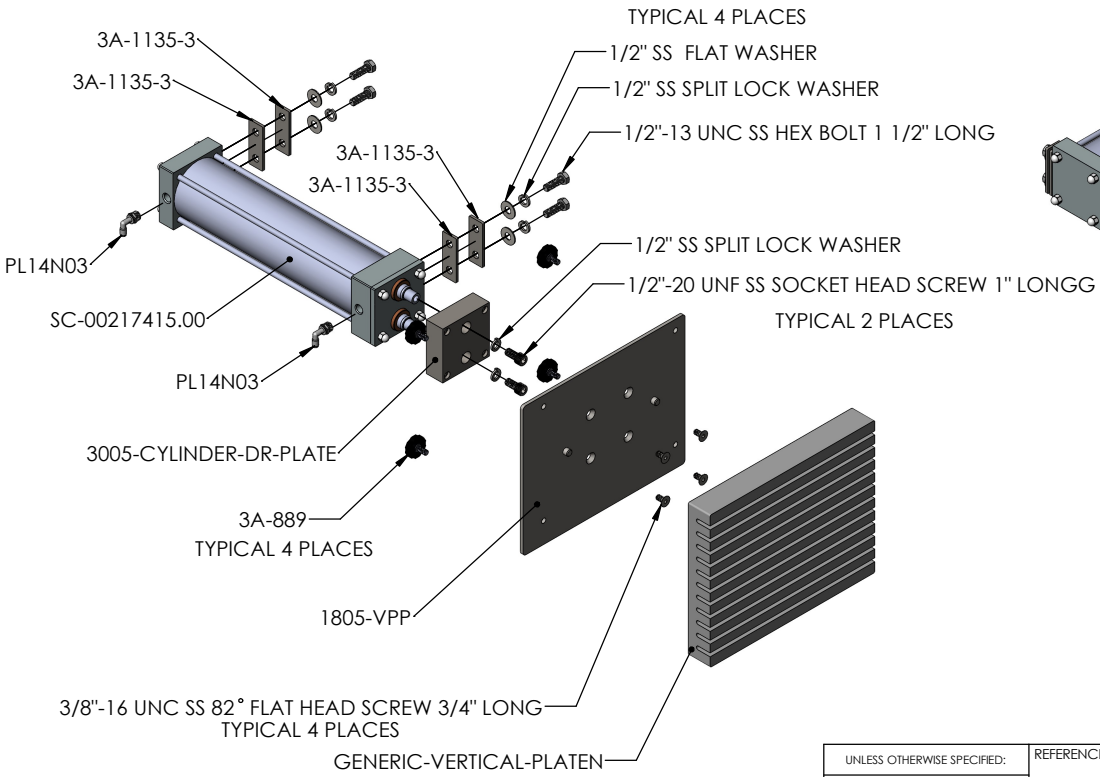
4


3

2

1

REVISIONS				
ZONE	REV.	DESCRIPTION	DATE	APPROVED
	0	INITIAL RELEASE	3/5/2022	B.VAN



UNLESS OTHERWISE SPECIFIED: DIMENSIONS ARE IN INCHES TOLERANCES: FRACTIONAL ±1/16" ANGULAR: MACH ±.5 BEND ±1 TWO PLACE DECIMAL ±.030" THREE PLACE DECIMAL ±.015"	REFERENCE PART		 1680 Cornell Road, Green Bay, WI 54313 (920) 458-2189 www.genmac.com			
	INTERPRET GEOMETRIC TOLERANCING PER:		TITLE: 1805-VERTICAL-CYLINDER			
PROPRIETARY AND CONFIDENTIAL THE INFORMATION CONTAINED IN THIS DRAWING IS THE SOLE PROPERTY OF GENMAC ANY REPRODUCTION IN PART OR AS A WHOLE WITHOUT THE WRITTEN PERMISSION OF GENMAC IS PROHIBITED.	NAME	DATE	SIZE	DWG. NO.	REV	
	DRAWN	B.VAN	3-5-22	B	1805-PURCHASED-PARTS	0
	CHECKED					
	ENG APPR.					
MFG APPR.			SCALE: 1:8	MATERIAL SEE DETAILS	WEIGHT:	
Q.A.					SHEET 12 OF 22	

4

3

2

1

B

B

A

A

4

3

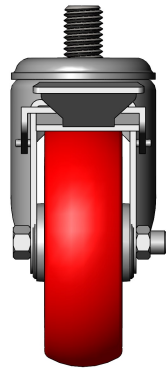
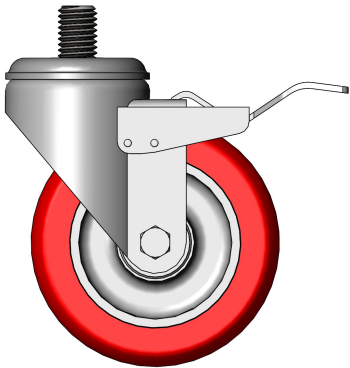
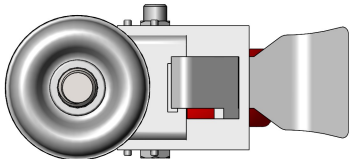
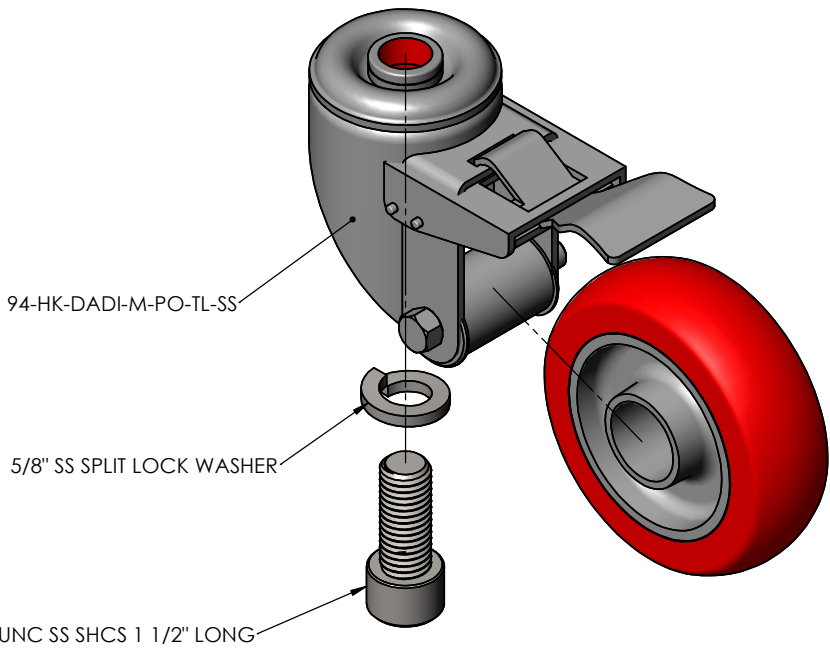
2

1

REVISIONS				
ZONE	REV.	DESCRIPTION	DATE	APPROVED
	0	INITIAL RELEASE	3/5/2022	B.VAN


B

B



A

A

UNLESS OTHERWISE SPECIFIED: DIMENSIONS ARE IN INCHES TOLERANCES: FRACTIONAL $\pm 1/16"$ ANGULAR: MACH $\pm .5$ BEND ± 1 TWO PLACE DECIMAL $\pm .030"$ THREE PLACE DECIMAL $\pm .015"$	REFERENCE PART	 1680 Cornell Road, Green Bay, WI 54313 (920) 458-2189 www.genmac.com					
	INTERPRET GEOMETRIC TOLERANCING PER:		TITLE: 1820-CASTER-ASSY				
PROPRIETARY AND CONFIDENTIAL THE INFORMATION CONTAINED IN THIS DRAWING IS THE SOLE PROPERTY OF GENMAC ANY REPRODUCTION IN PART OR AS A WHOLE WITHOUT THE WRITTEN PERMISSION OF GENMAC IS PROHIBITED.	<table border="1"> <thead> <tr> <th>NAME</th> <th>DATE</th> </tr> </thead> <tbody> <tr> <td>B.VAN</td> <td>3-5-22</td> </tr> </tbody> </table>	NAME	DATE	B.VAN	3-5-22	SIZE: B DWG. NO. 1805-PURCHASED-PARTS REV 0	
	NAME	DATE					
	B.VAN	3-5-22					
	<table border="1"> <thead> <tr> <th>ENG APPR.</th> <th>MFG APPR.</th> <th>Q.A.</th> </tr> </thead> <tbody> <tr> <td> </td> <td> </td> <td> </td> </tr> </tbody> </table>	ENG APPR.	MFG APPR.	Q.A.			
ENG APPR.	MFG APPR.	Q.A.					

4

3

2

1

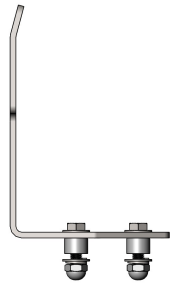
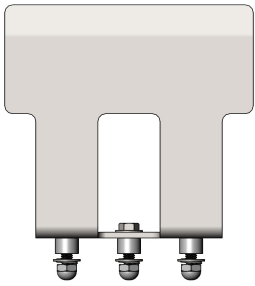
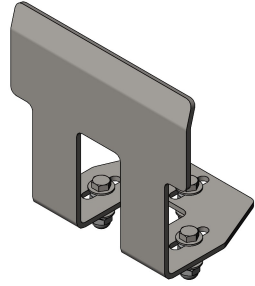
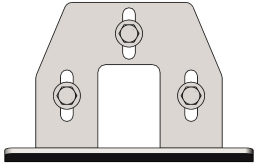
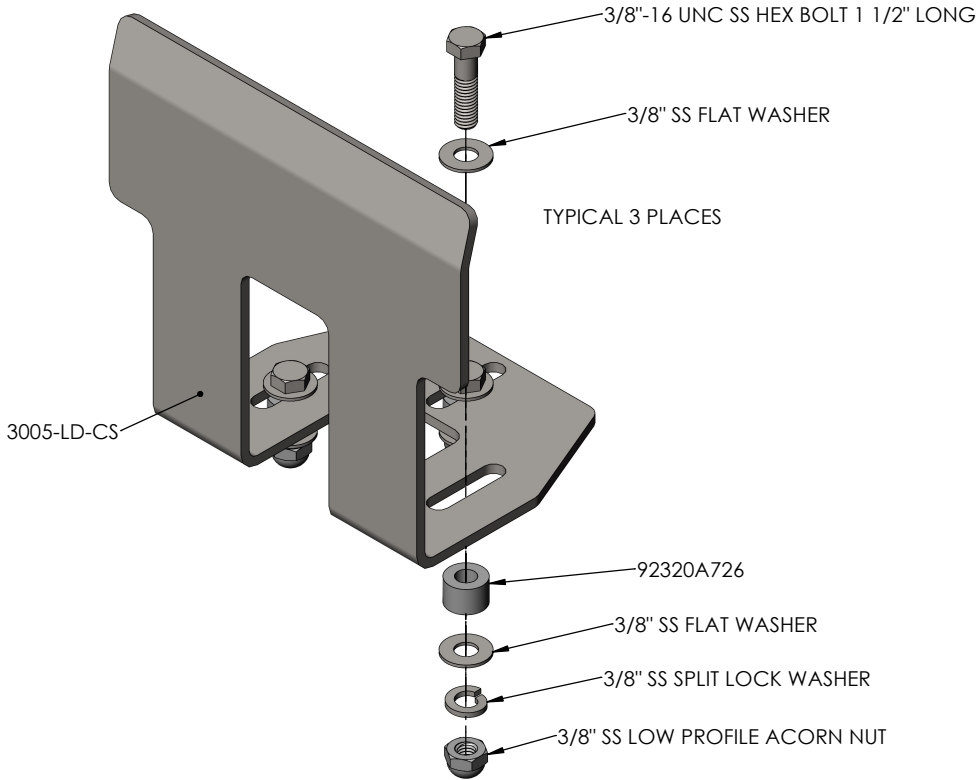
4


3

2

1

REVISIONS				
ZONE	REV.	DESCRIPTION	DATE	APPROVED
	0	INITIAL RELEASE	3/5/2022	B.VAN



UNLESS OTHERWISE SPECIFIED: DIMENSIONS ARE IN INCHES TOLERANCES: FRACTIONAL $\pm 1/16"$ ANGULAR: MACH $\pm .5$ BEND ± 1 TWO PLACE DECIMAL $\pm .030"$ THREE PLACE DECIMAL $\pm .015"$	REFERENCE PART	 1680 Cornell Road, Green Bay, WI 54313 (920) 458-2189 www.genmac.com				
	INTERPRET GEOMETRIC TOLERANCING PER:		TITLE: 3005-LD-CHEESE-STOP			
PROPRIETARY AND CONFIDENTIAL THE INFORMATION CONTAINED IN THIS DRAWING IS THE SOLE PROPERTY OF GENMAC ANY REPRODUCTION IN PART OR AS A WHOLE WITHOUT THE WRITTEN PERMISSION OF GENMAC IS PROHIBITED.	<table border="1"> <tr> <th>NAME</th> <th>DATE</th> </tr> <tr> <td>B.VAN</td> <td>3-5-22</td> </tr> </table>	NAME	DATE	B.VAN	3-5-22	SIZE: B DWG. NO.: 1805-PURCHASED-PARTS REV: 0
	NAME	DATE				
	B.VAN	3-5-22				
	<table border="1"> <tr> <td>SCALE: 1:2</td> <td>MATERIAL: SEE DETAILS</td> <td>WEIGHT:</td> </tr> </table>	SCALE: 1:2	MATERIAL: SEE DETAILS	WEIGHT:	SHEET 14 OF 22	
SCALE: 1:2	MATERIAL: SEE DETAILS	WEIGHT:				

4

3

2

1

4

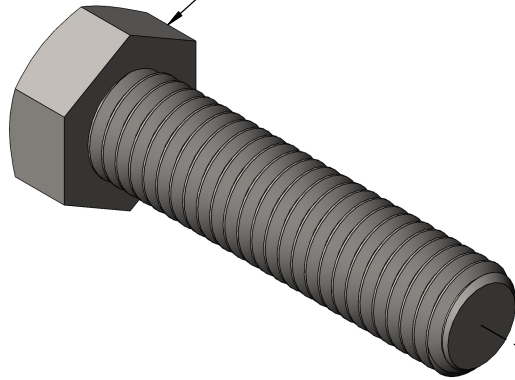
3

2

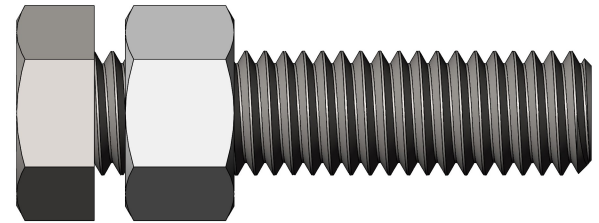
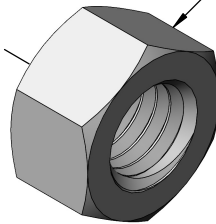
1


REVISIONS				
ZONE	REV.	DESCRIPTION	DATE	APPROVED
	0	INITIAL RELEASE	3/5/2022	B.VAN

1/2"-13 UNC SS HEX BOLT 2" LONG



1/2" SS HEX NUT



UNLESS OTHERWISE SPECIFIED: DIMENSIONS ARE IN INCHES TOLERANCES: FRACTIONAL $\pm 1/16"$ ANGULAR: MACH $\pm .5$ BEND ± 1 TWO PLACE DECIMAL $\pm .030"$ THREE PLACE DECIMAL $\pm .015"$	REFERENCE PART		 1680 Cornell Road, Green Bay, WI 54313 (920) 458-2189 www.genmac.com			
	INTERPRET GEOMETRIC TOLERANCING PER:			TITLE: 3005-LD-CYLINDER-JACK		
PROPRIETARY AND CONFIDENTIAL THE INFORMATION CONTAINED IN THIS DRAWING IS THE SOLE PROPERTY OF GENMAC ANY REPRODUCTION IN PART OR AS A WHOLE WITHOUT THE WRITTEN PERMISSION OF GENMAC IS PROHIBITED.	DRAWN	NAME B.VAN	DATE 3-5-22	SIZE B	DWG. NO. 1805-PURCHASED-PARTS	REV 0
	CHECKED			SCALE: 2:1	MATERIAL SEE DETAILS	WEIGHT:
	ENG APPR.					
	MFG APPR.					
Q.A.						SHEET 15 OF 22

4

3

2

1

B

B

A

A

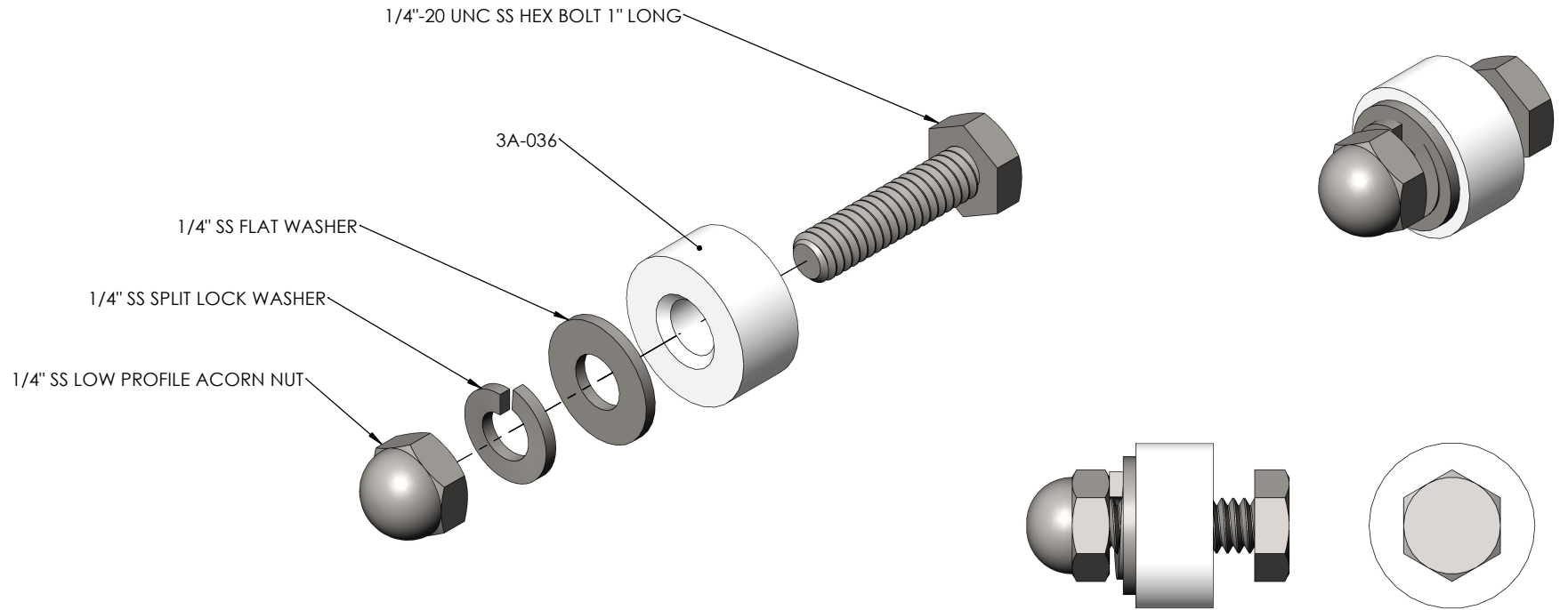
4


3

2

1

REVISIONS				
ZONE	REV.	DESCRIPTION	DATE	APPROVED
	0	INITIAL RELEASE	3/5/2022	B.VAN



UNLESS OTHERWISE SPECIFIED:		REFERENCE PART		 1680 Cornell Road, Green Bay, WI 54313 (920) 458-2189 www.genmac.com											
DIMENSIONS ARE IN INCHES TOLERANCES: FRACTIONAL $\pm 1/16$ " ANGULAR: MACH $\pm .5$ BEND ± 1 TWO PLACE DECIMAL $\pm .030$ " THREE PLACE DECIMAL $\pm .015$ "		INTERPRET GEOMETRIC TOLERANCING PER:		TITLE: 3005-LD-DOOR-STOP											
PROPRIETARY AND CONFIDENTIAL THE INFORMATION CONTAINED IN THIS DRAWING IS THE SOLE PROPERTY OF GENMAC ANY REPRODUCTION IN PART OR AS A WHOLE WITHOUT THE WRITTEN PERMISSION OF GENMAC IS PROHIBITED.		<table border="1"> <tr> <th>NAME</th> <th>DATE</th> </tr> <tr> <td>B.VAN</td> <td>3-5-22</td> </tr> </table>	NAME	DATE	B.VAN	3-5-22	<table border="1"> <tr> <th>SIZE</th> <th>DWG. NO.</th> <th>REV</th> </tr> <tr> <td>B</td> <td>1805-PURCHASED-PARTS</td> <td>0</td> </tr> </table>	SIZE	DWG. NO.	REV	B	1805-PURCHASED-PARTS	0	SCALE: 2:1	
NAME	DATE														
B.VAN	3-5-22														
SIZE	DWG. NO.	REV													
B	1805-PURCHASED-PARTS	0													
MATERIAL: SEE DETAILS		WEIGHT:		SHEET 16 OF 22											

4

3

2

1

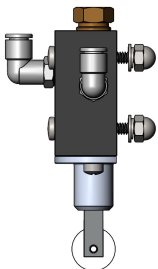
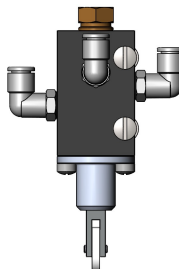
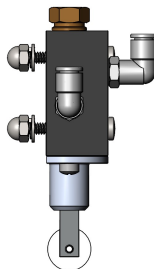
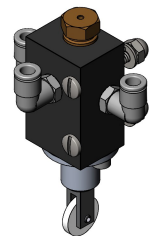
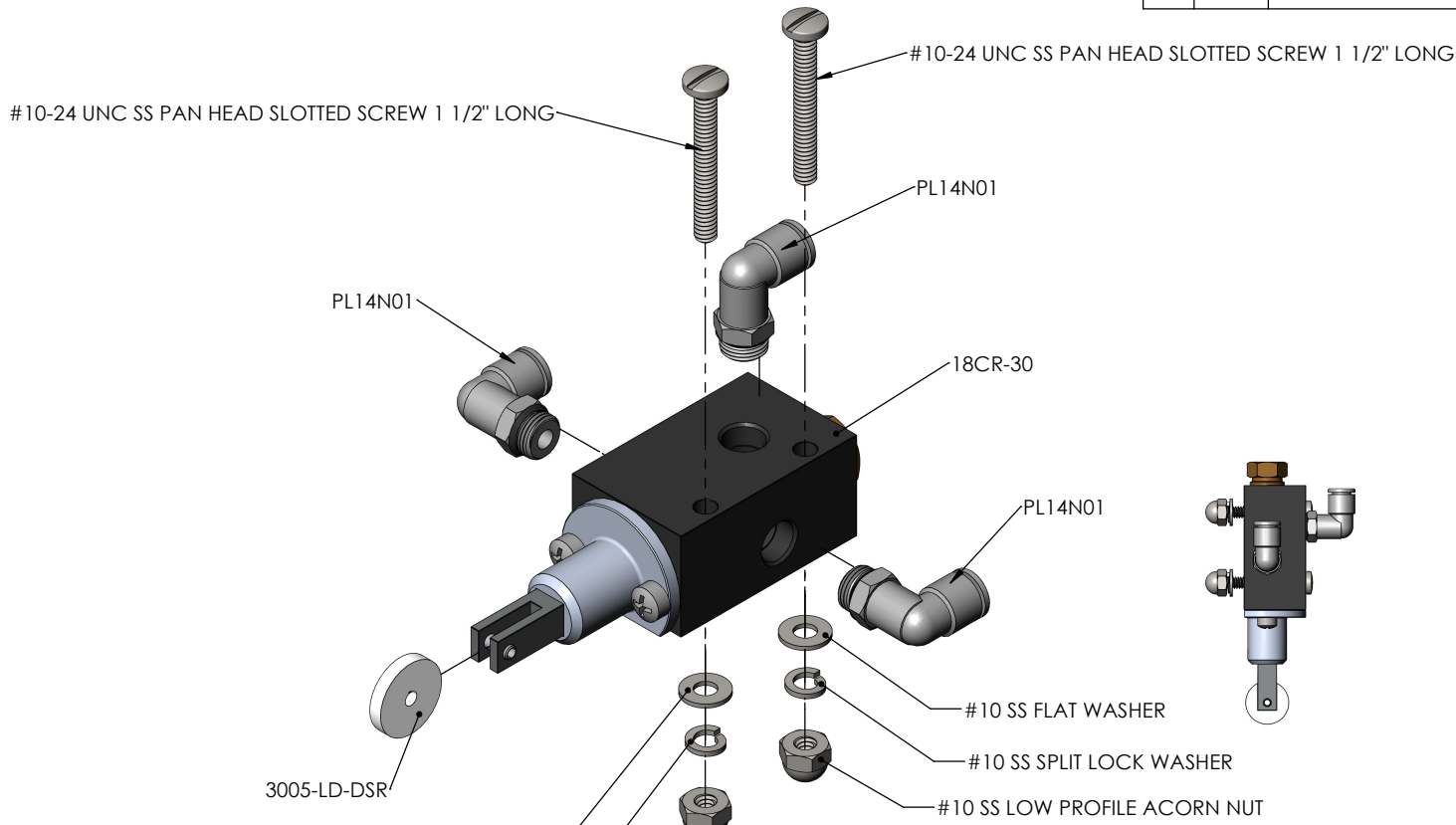
4

3


2

1

REVISIONS				
ZONE	REV.	DESCRIPTION	DATE	APPROVED
	0	INITIAL RELEASE	3/5/2022	B.VAN



- #10 SS FLAT WASHER
- #10 SS SPLIT LOCK WASHER
- #10 SS LOW PROFILE ACORN NUT

UNLESS OTHERWISE SPECIFIED: DIMENSIONS ARE IN INCHES TOLERANCES: FRACTIONAL: ±1/16" ANGULAR: MACH ±.5 BEND ±1 TWO PLACE DECIMAL ±.030" THREE PLACE DECIMAL ±.015"	REFERENCE PART	 1680 Cornell Road, Green Bay, WI 54313 (920) 458-2189 www.genmac.com	TITLE:	3005-LD-DOOR-SWITCH	
	PROPRIETARY AND CONFIDENTIAL THE INFORMATION CONTAINED IN THIS DRAWING IS THE SOLE PROPERTY OF GENMAC ANY REPRODUCTION IN PART OR AS A WHOLE WITHOUT THE WRITTEN PERMISSION OF GENMAC IS PROHIBITED.		INTERPRET GEOMETRIC TOLERANCING PER:	SIZE: B DWG. NO.: 1805-PURCHASED-PARTS SCALE: 1:1	MATERIAL: SEE DETAILS WEIGHT:

4

3

2

1

4

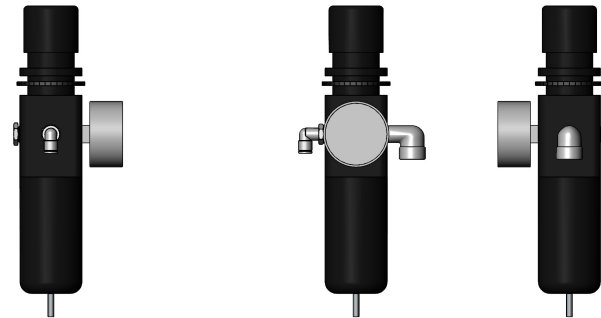
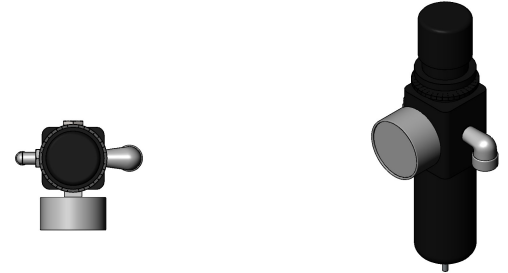
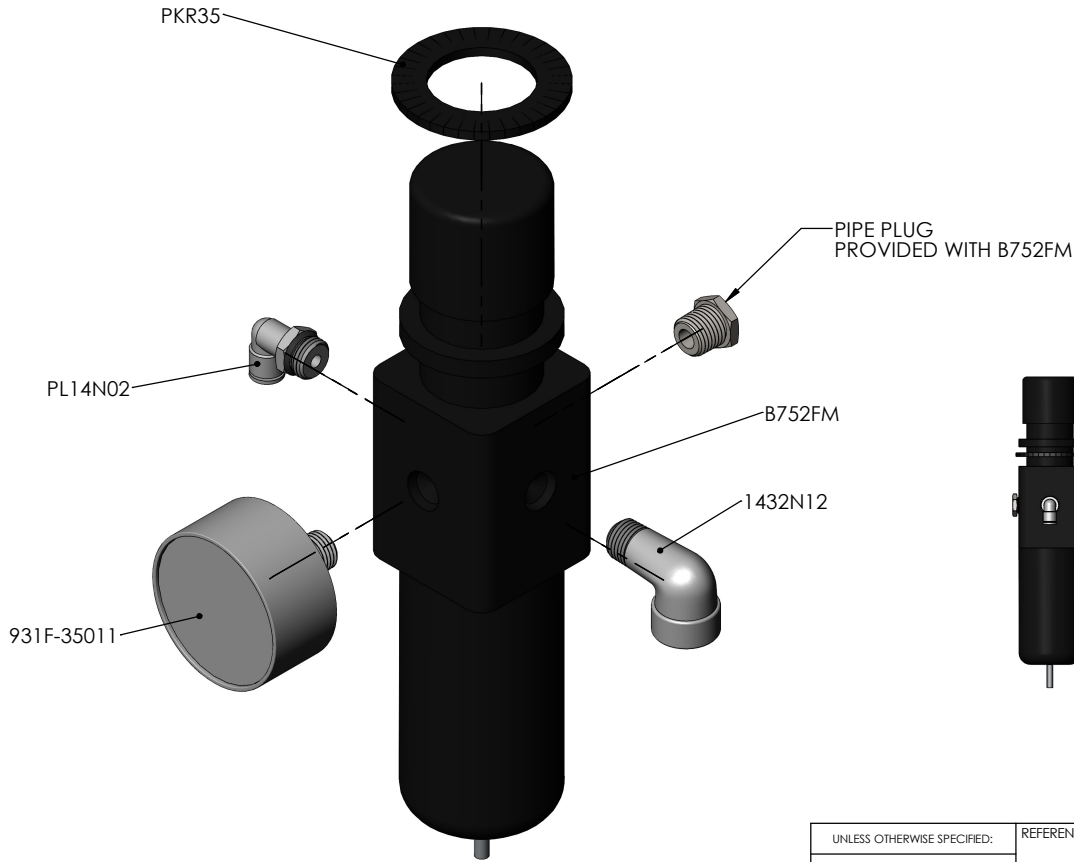
3

2

1

REVISIONS				
ZONE	REV.	DESCRIPTION	DATE	APPROVED
	0	INITIAL RELEASE	3/5/2022	B.VAN


B



B

A

A

UNLESS OTHERWISE SPECIFIED: DIMENSIONS ARE IN INCHES TOLERANCES: FRACTIONAL $\pm 1/16"$ ANGULAR: MACH $\pm .5$ BEND ± 1 TWO PLACE DECIMAL $\pm .030"$ THREE PLACE DECIMAL $\pm .015"$	REFERENCE PART	 1680 Cornell Road, Green Bay, WI 54313 (920) 458-2189 www.genmac.com	TITLE: 3005-LD-FILTER-GUAGE	
	PROPRIETARY AND CONFIDENTIAL THE INFORMATION CONTAINED IN THIS DRAWING IS THE SOLE PROPERTY OF GENMAC ANY REPRODUCTION IN PART OR AS A WHOLE WITHOUT THE WRITTEN PERMISSION OF GENMAC IS PROHIBITED.		INTERPRET GEOMETRIC TOLERANCING PER:	SIZE: B DWG. NO.: 1805-PURCHASED-PARTS SCALE: 1:4

4

3

2

1

4

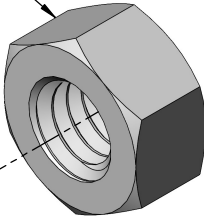
3

2

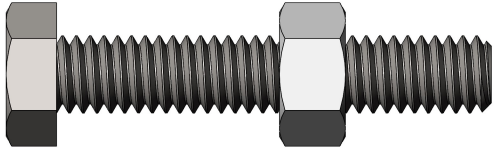
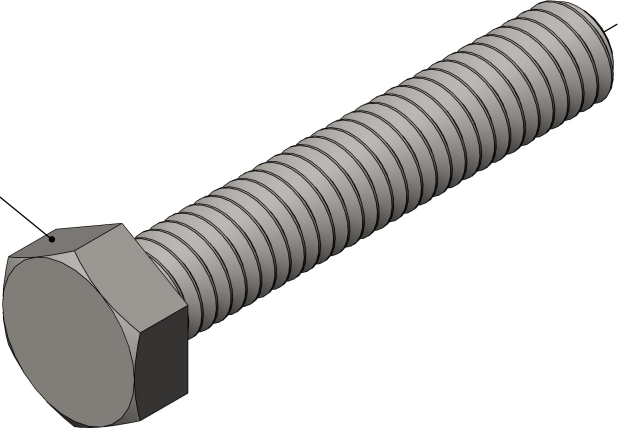
1


REVISIONS				
ZONE	REV.	DESCRIPTION	DATE	APPROVED
	0	INITIAL RELEASE	3/5/2022	B.VAN

5/16" SS HEX NUT



5/16"-18 UNC SS HEX BOLT 1 3/4" LONG



UNLESS OTHERWISE SPECIFIED: DIMENSIONS ARE IN INCHES TOLERANCES: FRACTIONAL $\pm 1/16"$ ANGULAR: MACH $\pm .5$ BEND ± 1 TWO PLACE DECIMAL $\pm .030"$ THREE PLACE DECIMAL $\pm .015"$	REFERENCE PART		 1680 Cornell Road, Green Bay, WI 54313 (920) 458-2189 www.genmac.com			
	INTERPRET GEOMETRIC TOLERANCING PER:			TITLE: 3005-LD-HARP-JACK		
PROPRIETARY AND CONFIDENTIAL THE INFORMATION CONTAINED IN THIS DRAWING IS THE SOLE PROPERTY OF GENMAC ANY REPRODUCTION IN PART OR AS A WHOLE WITHOUT THE WRITTEN PERMISSION OF GENMAC IS PROHIBITED.	DRAWN	NAME B.VAN	DATE 3-5-22	SIZE B	DWG. NO. 1805-PURCHASED-PARTS	REV 0
	CHECKED			SCALE: 2:1	MATERIAL SEE DETAILS	WEIGHT:
	ENG APPR.					
	MFG APPR.					
Q.A.						SHEET 19 OF 22

4

3

2

1

B

B

A

A

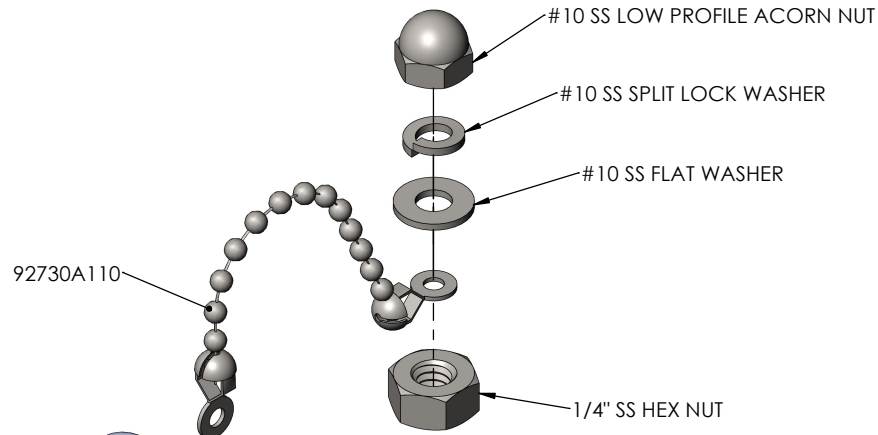
4

3

2

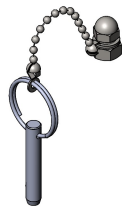
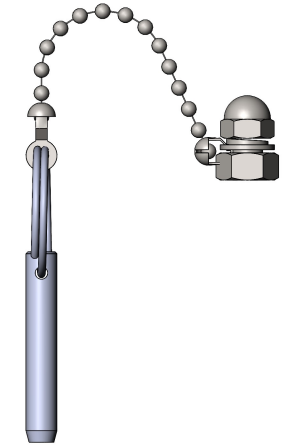
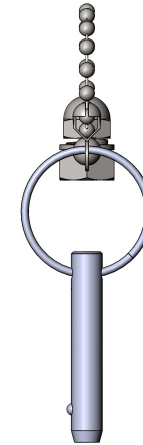
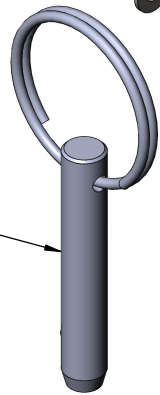
1


REVISIONS				
ZONE	REV.	DESCRIPTION	DATE	APPROVED
	0	INITIAL RELEASE	3/5/2022	B.VAN



1/4-20 SS HEX NUT
WILL NOT THREAD ON STUD
OF 3005-LD WELDMENT
(USED AS A SPACER ONLY)

98404A959



UNLESS OTHERWISE SPECIFIED:		REFERENCE PART		 1680 Cornell Road, Green Bay, WI 54313 (920) 458-2189 www.genmac.com			
DIMENSIONS ARE IN INCHES TOLERANCES: FRACTIONAL $\pm 1/16"$ ANGULAR: MACH $\pm .5$ BEND ± 1 TWO PLACE DECIMAL $\pm .030"$ THREE PLACE DECIMAL $\pm .015"$		INTERPRET GEOMETRIC TOLERANCING PER:				TITLE: 3005-LD-LANYARD	
PROPRIETARY AND CONFIDENTIAL THE INFORMATION CONTAINED IN THIS DRAWING IS THE SOLE PROPERTY OF GENMAC ANY REPRODUCTION IN PART OR AS A WHOLE WITHOUT THE WRITTEN PERMISSION OF GENMAC IS PROHIBITED.		NAME	DATE	SIZE	DWG. NO.	REV	
		DRAWN	B.VAN	3-5-22	B	1805-PURCHASED-PARTS	0
		CHECKED					
		ENG APPR.			SCALE:	MATERIAL	WEIGHT:
MFG APPR.			1:1	SEE DETAILS			
Q.A.					SHEET 20 OF 22		

4

3

2

1

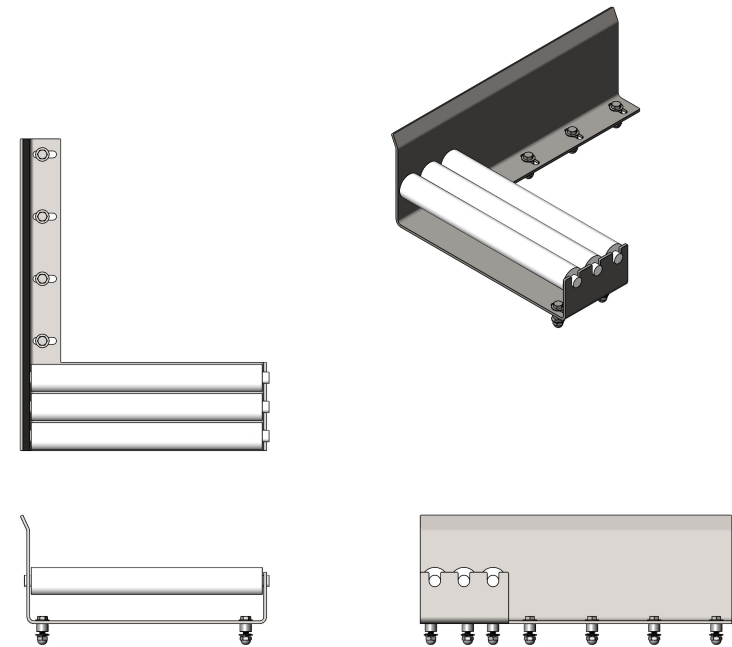
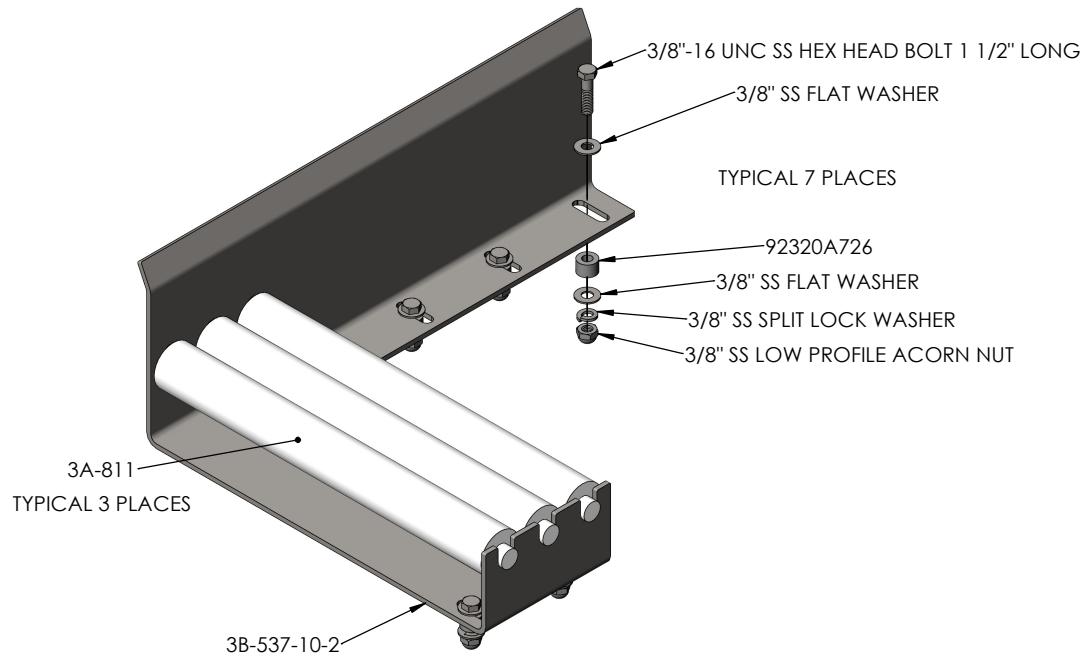
4


3

2

1

REVISIONS				
ZONE	REV.	DESCRIPTION	DATE	APPROVED
	0	INITIAL RELEASE	3/5/2022	B.VAN



UNLESS OTHERWISE SPECIFIED: DIMENSIONS ARE IN INCHES TOLERANCES: FRACTIONAL $\pm 1/16"$ ANGULAR: MACH $\pm .5$ BEND ± 1 TWO PLACE DECIMAL $\pm .030"$ THREE PLACE DECIMAL $\pm .015"$	REFERENCE PART		 1680 Cornell Road, Green Bay, WI 54313 (920) 458-2189 www.genmac.com			
	INTERPRET GEOMETRIC TOLERANCING PER:				TITLE: 3005-LD-MINI-RB	
PROPRIETARY AND CONFIDENTIAL THE INFORMATION CONTAINED IN THIS DRAWING IS THE SOLE PROPERTY OF GENMAC ANY REPRODUCTION IN PART OR AS A WHOLE WITHOUT THE WRITTEN PERMISSION OF GENMAC IS PROHIBITED.	NAME	DATE	SIZE	DWG. NO.	REV	
	DRAWN	B.VAN	3-5-22	B	1805-PURCHASED-PARTS	0
	CHECKED					
	ENG APPR.					
MFG APPR.						
Q.A.			SCALE: 1:8	MATERIAL: SEE DETAILS	WEIGHT:	SHEET 21 OF 22

4

3

2

1

4

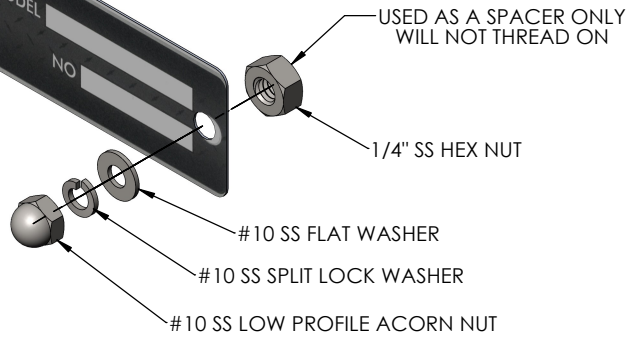
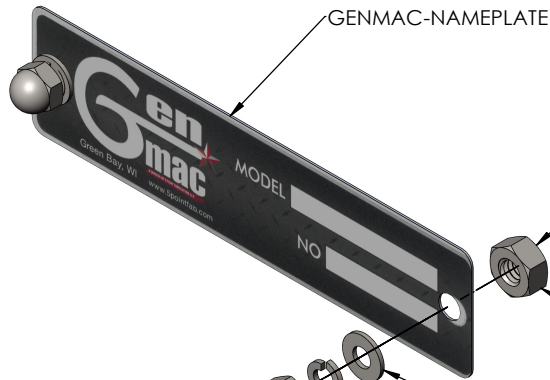
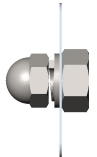
3

2

1

REVISIONS				
ZONE	REV.	DESCRIPTION	DATE	APPROVED
	0	INITIAL RELEASE	3/5/2022	B.VAN

STAMP WITH MODEL & SERIAL NUMBER BEFORE SHIPPING



TYPICAL 2 PLACES

UNLESS OTHERWISE SPECIFIED: DIMENSIONS ARE IN INCHES TOLERANCES: FRACTIONAL $\pm 1/16"$ ANGULAR: MACH $\pm .5$ BEND ± 1 TWO PLACE DECIMAL $\pm .030"$ THREE PLACE DECIMAL $\pm .015"$	REFERENCE PART	 1680 Cornell Road, Green Bay, WI 54313 (920) 458-2189 www.genmac.com	TITLE:			
	INTERPRET GEOMETRIC TOLERANCING PER:		NAME-PLATE-ASSY			
PROPRIETARY AND CONFIDENTIAL THE INFORMATION CONTAINED IN THIS DRAWING IS THE SOLE PROPERTY OF GENMAC ANY REPRODUCTION IN PART OR AS A WHOLE WITHOUT THE WRITTEN PERMISSION OF GENMAC IS PROHIBITED.	NAME	DATE	SIZE	DWG. NO.	REV	
	DRAWN	B.VAN	3-5-22	B	1805-PURCHASED-PARTS	0
	CHECKED					
	ENG APPR.					
MFG APPR.						
Q.A.			SCALE: 1:1	MATERIAL: SEE DETAILS	WEIGHT:	SHEET 22 OF 22

4

3

2

1

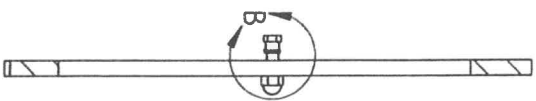
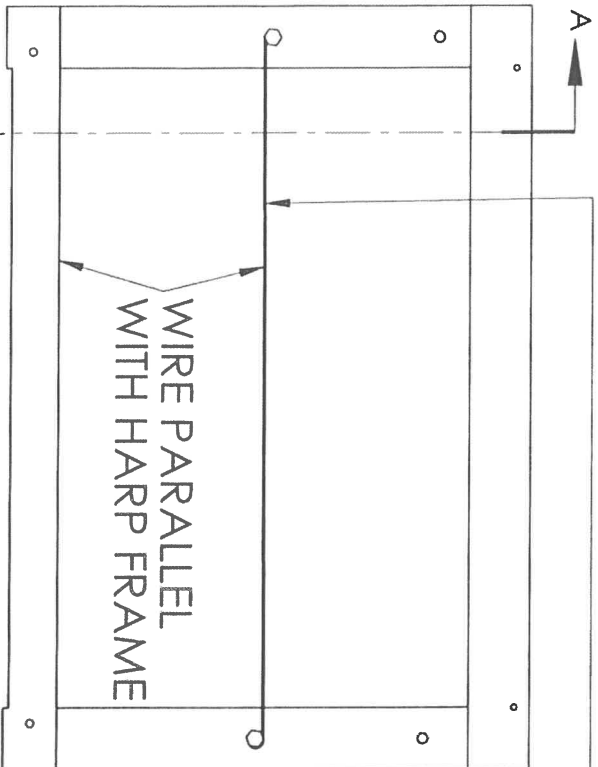
B

B

A

A

BE SURE WIRE IS WINDING AROUND THE BOTTOM OF LEFT SIDE WIRE BOLT, AND AROUND THE TOP OF THE RIGHT SIDE WIRE BOLT. THE WIRE SHOULD APPEAR STRAIGHT IF DONE PROPERLY.

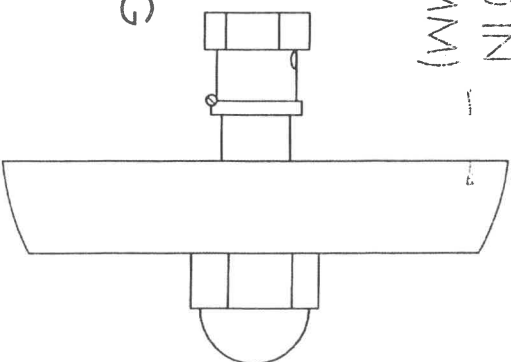


WIRE TIGHTENING TORQUE:

- .041" WIRE 110 IN-LBS
- .059" WIRE 140 IN-LBS

START TIGHTENING WIRE BOLT WITH .250 INCH OR 6 MM DISTANCE AS SHOWN

.250 IN
(6 MM)



CUT WIRE 9 INCHES LONGER THAN SPACING BETWEEN BOLTS BE SURE 1/4 INCH OF THREAD AVAILABLE IN EACH WIRE BOLT INSERT EACH END THROUGH WIRE BOLT, MAKE VERY SMALL BEND IN ENDS OF WIRE SO THEY CAN'T COME BACK THROUGH PULL WIRE UP (IF LOOKING AT DRAWING ABOVE THIS) WHILE MAKING 3 COMPLETE TURNS ON FIRST WIRE BOLT. TIGHTEN NUT ON BACK REPEAT ON OTHER SIDE TILL APPROPRIATE TORQUE REACHED.

RE-TIGHTEN NEW WIRES AFTER CUTTING A FEW BLOCKS, AND PERIODICALLY AS THEY STRETCH

DETAIL B
SCALE 1 : 1

REDUCING BROKEN WIRE OCCURRENCES:

Several things contribute to increased frequency of breaking wires. Use this checklist to improve your process wherever possible.

Product issues: Different cheeses have different features that can make it difficult, or even impossible to cut. If the cheese has a wax, plastic, or cured “skin”, this can cause problems for the wire to start its cut. Cutting cheese with wires has limitations, but here are some things to consider, to improve the results.

Temperature: The temperature of the product has a huge effect on cutting. A firm cheese that is kept in a cooler till just before cutting (below 40 F for example) will be remarkably harder to cut than if the same product was at 45 F. If a firm cheese is breaking wires often, temper the block to a warmer temperature if possible. Every 2 degrees warmer will yield noticeable improvements.

Wire Diameter: A wide range of wire sizes are available through our parts department. We supply a tested brand in many sizes that have given the best results. Generally, for a cheese similar to cheddar, cutting at 40-45 degrees we recommend a .041” diameter wire. For softer cheeses, we often recommend a smaller wire. For harder or colder product, we offer up to .059” diameter wire. If you are breaking wires regularly, are not able to warm the product, and are following the torque guidelines (following section), and are using a quality wire, then it may be time to go to a heavier wire.

Wire tightening technique: Wires need to be tight enough to not “bow” too much while cutting but tightening the wires TOO much can easily stretch the wire past it’s yield point, drastically shortening the life of the wire. Use this chart for specific wire diameters to apply the recommended torque:

Wire Diameter	Torque (IN-LB)	Torque (FT-LB)
0.016	16.17	1.35
0.029	49.49	4.12
0.035	70.49	5.87
0.041	95.47	7.96
0.05	137.79	11.48
0.059	185.35	15.45

Note: Wires will stretch and require regular retightening, especially after the first few cuts.